

SNODLAND HISTORICAL SOCIETY NEWSLETTER

Volume 7, Issue 1

www.snodlandhistory.org.uk

December 2003

Correspondence

Correspondence and enquiries about the Society (including applications for membership) should be addressed to Dr. Andrew Ashbee, 214, Malling Road, Snodland, Kent ME6 5EQ (tel 01634-243001; e-mail: aa0060962@blueyonder.co.uk); or to the Secretary: Mr. Neil Miners, 13 Gorham Close, Snodland, Kent ME6 5EZ.

Subscriptions

Subscriptions for the present season became due on 1st September 2003. They remain at the same rates as before: £5 individuals (£2.50 aged 14-17); £7.50 joint adult membership; £10 family; £50 corporate. Cheques (payable to Snodland Historical Society) should be sent to the Treasurer, Mr. Brian Tansley, 11 Godden Road, Snodland, Kent ME6 5HF, or given to him at a Society meeting. Membership will cease if a subscription remains unpaid by 1 February 2004.

Meetings

Are held at the Devonshire Rooms, Waghorn Road, on Wednesdays at 8 p.m. Visitors are welcome at £1 per meeting.

28 January 2004. Bob Ratcliffe returns to give an illustrated talk, this time about 'The Railways of Rochester'.

3 March 2004. Philip Lawrence will give the first of two related talks on 'A Kentish parish in the 1870's - Cliffe at Hoo'. The second one will be included in next season's meetings.

7 April 2004. We are delighted that Helen Glass, Director of Archaeology for the Channel Tunnel Rail Link can come to up-date us on the latest finds and investigations. Please note that the order of our last two meetings is now reversed.

5 May 2004. Jeremy Ashbee will give an illustrated talk on Rochester Castle.

Publications

The text of Pamphlet 18: *The Early Papermakers of Snodland* has been added to the papers published by the Kent Archaeological Society on their web-site: www.kenthistory.ac.uk/papers and can be down-loaded from there.

Andrew Ashbee's account of 'The Murder of P.C. Israel May at Snodland, 24 August 1873' has been re-printed as pamphlet No. 20 [18 pages, £1]. This will be available from 5 January 2004.

Work will soon start on a re-vamped history of the Parish Church of All Saints, again based on Andrew Ashbee's previous publication of 1980. This will be pamphlet No. 21.

The First Edition of 'A Database of Snodland Parishioners to 1901' is complete and this will be available as a CD-ROM from the beginning of January. Cost to all purchasers will be £10 (including UK postage; add £1 for overseas). This is by far our largest project to date and is on-going, so further editions will appear in later years as required. Work began in the 1970s as a card index compiled by Andrew Ashbee. Further information has been added gradually from registers, censuses, and other sources, including help from family historians. We have put all the pre-1800 information onto our web-site, but since it is continually being revised there are no plans to add the main database for 1800-1901 there. However, in addition to the CD-ROM, it can be seen and consulted on the Snodland Millennium Museum computers. A sample page appears overleaf to show the scope of each entry, but of course some have minimal information, while others (like the one shown) are already quite comprehensive. Here is the text of part of the

Ref: MAY.095 Surname: MAYATT
 Forenames: Henry William Gender: M
 Born when: Born where: Snodland
 Baptized when: 30-09-1877 Baptized where: Snodland AS
 Married when: 16-08-1902 Married where: Lewisham
 Married whom: Annie Eliza Wright
 2nd marr. when: 2nd marr. where:
 2nd marr. whom:
 Died when: 06-07-1917 Died where: France/Flanders
 Died of: wounds
 Buried when: Buried where: Duisans British Cemetery, Etrun. Pas de Calais, Grave IV.N.53
 Burial age:
 Father's name: Edward Phillips Mayatt
 Mother's name: Ellen [...]
 Address:
 Career: Scholar (1881); Paper mill: cutter boy (1891); lab. in Lime works (1901)
 Children:
 Remarks: Queen's Own Royal West Kent Regiment, 1st Battalion; private G/903; enlisted Maidstone; brother in law to Alfred Wallis
 Sources: 1881-1901 census, register, war memorial in cemetery

Introduction to show what is included:

This database is an attempt to list all people known to have lived in Snodland between 1800 and the end of 1901. It will never be complete - and future editions will be produced at later times as more information is forthcoming - but this first version has as its base all persons listed as baptized, married or buried from parish and other available registers between those years and all persons listed in the Snodland censuses 1841-1901. Anything else (and there is plenty) is a bonus.

The registers searched are:

1. The parish registers of All Saints, complete for the period, except that there appears to be a gap in the marriages between 6 August 1809 and 31 July 1814 (at a change of registers). (Also about half-a-dozen entries are illegible on the microfilm and have yet to be ascertained from the originals.)
2. Christ Church, Lower Birling: a chapel of ease to Birling parish church, opened in 1893 and serving the southern end of Snodland parish as well as the adjacent hamlet of Ham Hill (which only became part of Snodland in 1988). Baptisms and burials date from 1893, but no weddings took place here until 1911. Weddings before 1911 have still to be recorded from the parish registers of All Saints, Birling. The database currently incorporates baptisms 1893-1901, burials 29 November 1894 to 6 January 1966. [Snodland Historical Society Registers series No. 1 is the burials 1894-1966]
3. Congregational (formerly 'Independent') church. Baptisms 1836-1868 written in 'The Church Book of the Independents' and 'Certificates of Baptisms' 11 March 1883 to 24 January 1907 (both volumes now deposited at the Medway Archives and Study Centre) [All published as Snodland Historical Society

Registers series No. 2]

4. The Church of St John the Evangelist (Swedenborgian), (also known as 'The New Jerusalem') established and built by the Hook family, papermaker masters of Snodland Paper Mill, in 1882; closed c.1988. Weddings: 7 July 1883 to December 1938. The Baptism registers begin at 2 February 1913 so are not included. Apparently there are some earlier baptisms recorded on a board inside the church, but access to see these has not been possible. [Snodland Historical Society has published the complete extant registers: Baptisms 1913-1988 and Weddings 1883-1988: Registers series, No. 4.]
5. Primitive Methodist Church, Malling Road. Opened in 1873. A single small register book is known (currently held at the United Church), from which all baptisms, weddings and burials recorded before 1938 are incorporated in the database.
6. Snodland Parish Cemetery. Opened in 1896, after which only selected burials were allowed at All Saints Churchyard. All denominations. The database includes all burials listed in the first register: 19 March 1896 to 17 April 1952, together with a few later entries gleaned from a manuscript book drawn up by the cemetery caretaker for receipts by clergy for burial fees, 1952-1977. The latter varies in detail according to the whims of the compilers, so at some stage will be checked against the official register. [Snodland Historical Society Registers series No. 3 is the first register]
7. No registers are known for the Baptist Church formerly in Church Fields.

Information from the extant (and some lost) memorials in All Saints churchyard has been included.

Entries from several Trade Directories have been noted: Samuel Bagshaw's directory, 1847; Kelly's directory, 1855; F. C. Melville's directory, 1858; Kelly's directories, 1859; 1867, 1874, 1882, 1887, 1891, 1895, 1899, 1905

This First Edition of the 1800-1901 database has more than 17,500 entries and must be one of the most comprehensive projects of its kind undertaken for a single parish. More than 2000 surnames and variants are found. The pages can be searched for any word or name, so it will also be a useful tool for studies of occupations, places of birth, places of residence, and so on.

Since there is plenty of space on the CD we have also included all our lists of Snodland parishioners from earliest times to 1800. (These too can be seen at the Museum.)

Museum

Among the more significant material to have been deposited recently are three items:

(1) John Hamilton, who has recently moved to Whitstable, has kindly given several files of papers, including notes and other items dating from his time as Parish Clerk about twenty years ago.

(2) Mrs Rosemary Crouch has kindly given files of papers relating to the Snodland Stagers. These are in addition to the collection of photographs of Stagers productions which she gave us some time ago.

(3) A rent book was recently rescued from a skip at the Paper Mill and has been donated to the Museum. This records weekly rents for 68 properties owned by the mill/Hook family in Mill Street, May Street, East Street and Brook Street, for the years 1890 to 1919. I have written to the mill on several occasions asking that historic material of this kind should at least be offered to us before it is destroyed, but my pleas seem to fall on deaf ears. The book will enable us to trace the comings and goings of tenants in the properties. It also shows the group of houses in Mill Street which were destroyed in the 1906 fire.

Closures: 2003-2004: from 21 December 2003, re-open 7 January 2004; Easter Sunday; 5 June (Local History Societies - including ours - at

Maidstone Museum); Carnival Day (early July).

Australian War Memorial

On 11 November the Australian War Memorial was unveiled at Hyde Park Corner. That evening TV news covered the event and sharp-eyed parishioners noticed 'Snodland' as the camera panned across the names on the memorial. The web-site about the memorial states that 'The 24,000 place names record the origins of Australian Servicemen and women, many of whom were born overseas.' We have ascertained that there is no 'Snodland' in Australia (which could have been founded by an emigrating parishioner in earlier times!), so this must be us. Presumably then someone born in Snodland emigrated to Australia and was killed in one of the two World Wars, perhaps the Second. Any information will be welcome.

New booklet

Pam and Peter Wotton have written *The Kent Turret Clocks of Thomas Cooke of York*. This includes the Clock Tower in Snodland and has photographs of the mechanism as well as the familiar Hambrook postcard of the exterior. It is an attractive booklet in the style of the well-known Shire Publications: 48 pages, including many colour illustrations: ISBN 1 85072 311 7. Copies are on sale at the Museum at £5.

Dressing up

A section in Fancy Dress is a familiar part of Carnival and other processions. We are accumulating quite a series of early photographs of Snodland groups in costume, but usually have no idea who the people are or what the occasion was. I showed two pictures of groups at the 'Prince of Wales' in Holborough Road at the December meeting and print one of those with a similar (third) picture overleaf. All probably date from around 1905-1910, since two are labelled as the work of 'Mason and Sons, Snodland and West Malling'. Masons seem to have been quite active in those years, but apparently did not issue commercial series of postcards like Hambrook (apart from the mill fire in 1906). They did photograph many events and groups.





Snodland Historical Society Newsletter

Volume 7, Issue 2

www.snodlandhistory.org

April 2004

Correspondence

Correspondence and enquiries about the Society (including applications for membership) should be addressed to

Dr. Andrew Ashbee, 214, Malling Road, Snodland, Kent ME6 5EQ (tel 01634-243001; e-mail: aa0060962@blueyonder.co.uk);

or to the Secretary:

Mr. Neil Miners, 13 Gorham Close, Snodland, Kent ME6 5EZ.

Contact by Computer

It has been suggested that some of our members, especially those who live outside Snodland, would be happy to receive their Newsletters (and perhaps sometimes other communications) by e-mail. We could easily send Newsletters, AGM papers, etc., in .pdf format, so saving postage and other costs, to anyone willing to receive them thus. In any case, it would be helpful for us to have a comprehensive list of e-mail addresses where members use them. I have some, but would be glad to hear of others via aa0060962@blueyonder.co.uk.

Events

Wednesdays, Devonshire Rooms at 8 p.m. unless otherwise noted.

April 7th Helen Glass, manager of archaeology for the Channel Tunnel Rail Link will give an illustrated talk on the latest finds.

April 21st We are delighted that Robert Ratcliffe will be able to give his talk on The Railways of Rochester on this date which unfortunately had to be cancelled in January because of the snow.

May 5th Jeremy Ashbee will give an illustrated talk on Rochester Castle

June 2 Devonshire Rooms, 7.30 p.m. To link with the 1400 anniversary of Rochester, Rev. Canon Jim Tipp and Andrew Ashbee give the first of two talks: 'What has the Church ever done for us?' This will be a historical look at the ways in which the Church has influenced the lives of local communities like ours. Jim will cover the broad picture, while Andrew will focus on local examples.

June 5 (Saturday) 'The History and Archaeology Show' at Maidstone Museum. Local societies from all over Kent (including ours) will have stands. We propose to take a television to show some of the audio-visual programmes and other material available at Snodland Millennium Museum, together with our range of publications.

June 9 The second of the Tipp/Ashbee talks: 7-30 p.m..

A Society Logo



Almost since the foundation of the Society the Committee has from time to time discussed the adoption of a logo. It was decided early on that a Snodland landmark (such as the clock tower) would not really be suitable of effective, but other ideas were not readily forthcoming. However, recently we have examined two possibilities and Brenda Ashbee kindly produced ink drawings of each. These were reduced in size and set alongside sample letter heads for Society correspondence. The first was based on the 1487 brass of Edward and Margaret Bischoptre in All Saints (which was also used for our panel in

the Millennium tapestry) and is shown here. It is undoubtedly an effective historical image associated with Snodland. The other was an ibis (as shown in the letter head above). In a vote the ibis won. 'Why an ibis?', you may ask. That is part of the fun of having it - something a little different. In fact the ibis has a closer link with our Society than the brass. The story is a remarkable one. In 1954 during clearance of the Roman tumulus on the 'Knob' it appears that a bronze ibis fell over the cliff face, unknown to archaeologists or workmen (and therefore unrecorded by them). It was picked up later by the quarry nightwatchman, who passed it to our member Cyril Godding. Cyril ensured that it reached the Guildhall Museum, Rochester, where it is still on display. Brenda's drawing restores the bird's feet (lost from the original artifact), but otherwise copies the shape exactly. The black and white plumage makes it an Egyptian ibis (the bronze is of course merely brown), since we assume that it was the association of the ibis with the Egyptian god Thoth which was the reason for its presence in the tumulus. There is every likelihood that at least some local 'Romans', including ours, had middle-eastern origins.

School Competition

The Committee has proposed that the Society inaugurates an annual competition for local pupils, so the text set out below will shortly be sent to the three Snodland schools and others further afield attended by Snodland pupils. We have no idea what response there will be, if any, but the first topic has been chosen because it fits with the National Curriculum.

SNODLAND HISTORICAL SOCIETY COMPETITION

In order to encourage an interest in local history by local pupils, Snodland Historical Society proposes to hold an annual competition.

Eligibility:

school pupils living in Snodland parish and any pupil attending one of the three Snodland schools.

Two classes of entry:

- (a) primary school pupils with a minimum age of seven
- (a) secondary school pupils

Prizes:

First: £25; Second: £10; Third: £5; in each class of entry

Topic for the 2004 competition:

SNODLAND IN VICTORIAN TIMES

Content:

Primary: a piece of illustrated written work with a minimum of 300 words

Secondary: a piece of illustrated written work with a minimum of 500 words

Closing date for Entries: 31 July 2004

To be received at Snodland Millennium Museum, or 214, Malling Road, Snodland, ME6 5EQ. Please attach a record of name, address, year age, name of school, to each entry.

Judges to be arranged by the Society, whose decision will be final. It is hoped to display at least the winning entries at Snodland Millennium Museum for a time (then they could be returned to the winners if wished).

We will mount an exhibition on 'Victorian Snodland' in the Museum from April to September.

Victoria County History

The Victoria County History series was founded in 1899 and so far has published more than 230 volumes. Of these just three are on Kent, the last published in 1930. But now the Kent series is being revived, thanks to the help of a grant from the Heritage Lottery Fund. This insists on the engagement of volunteers, who 'will use maps and records to explore agricultural and industrial change, within a group of parishes in the Lower Medway valley under the supervision of a professional historian.' Snodland is one of the parishes, so we anticipate being contacted about this during 2004. If any member would like to be involved with the research, please let me know. The VCH web-site describes the project as follows:

People and Work in the Lower Medway Valley 1700-1900

The impact of industrialisation on the parishes surrounding Rochester will be explored in the context of people and work. Some of the parishes possessed wharves along the Medway and in 1824 a commercial canal joined the Thames with the Medway at Strood, which is within the study area. Papermaking, brewing, the cement industry, brick-making, ship and barge building, seed crushing and engineering all made their impact on the life of this district. The study forms a prelude to a major

account of Rochester, with its diversified economy as market town and river port with some industry and fishing.

A Waghorn Picture

The Society has members always on the look-out for interesting material about Snodland at boot fairs, postcard fairs and Internet auctions, which they often acquire to add to their own collections. We are usually able to make copies and sometimes we are alerted to items for possible purchase ourselves. One such was found on the Internet recently: an ink drawing of Waghorn thought to have been made around 1850. Our bid was eventually successful at £43.17. There are few known pictures of the man, so we are delighted to have it. It may have been intended for a book illustration, but if so it is not one previously seen. We will have it framed and put on display in the Museum.

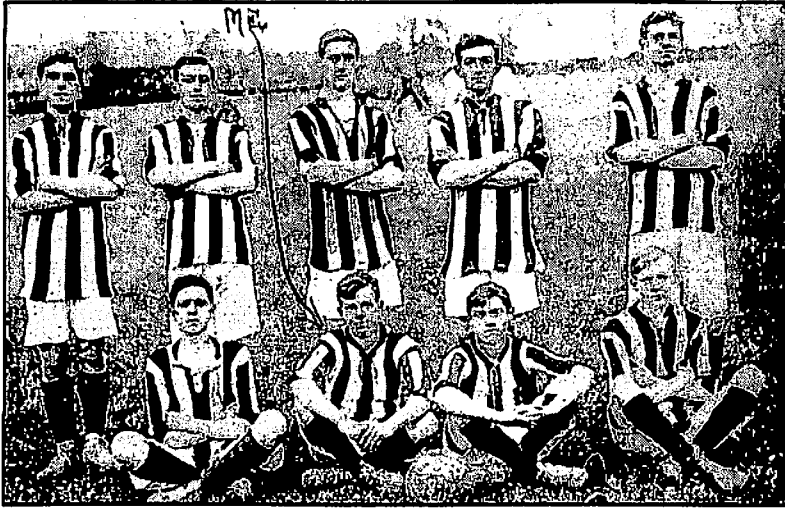


Family History

We have always been keen to co-operate with persons tracing their family history. Through them we can learn much about past parishioners, their work, their relationships, their social life and their

homes. With over 2000 surnames known for parishioners who lived in Snodland just between 1800 and 1900 we rely very much on individual research for each family and are extremely grateful when information about them is given to us. As previously recorded in Newsletters, we can offer an ever-growing amount of help: censuses, register transcriptions, directories, etc., and we continue to purchase such reference material when we can. We have just added five CD-ROMs from the Kent Family History Society, containing extracts from many Kentish registers, some poor-law records for mid-Kent (including Snodland), census returns for the Royal Marine Barracks, Chatham, and a surname index of Medway marriages up to 1812. Also from CD-Books the Kent Directory for 1934. The Kent census for 1861 should be available soon and that for 1871 is on order.

Recent enquiries include a gentleman from Woking researching Burrell, who would be grateful for any information, a lady in Australia researching Fryer and Phyll, a gentleman from Birmingham researching Vallance (as early papermakers in Kent - we don't seem to have any here, but there is a Vallins family at the end of the 19th century not involved in papermaking), a new lady member from High Wycombe researching Harrison, Cheek and Phillips (known in Aylesford and Burham rather than Snodland, but connected with the cement industry and railway), a gentleman from Thurso enquiring about the ferry and his ancestor Henry Robert Hucks (d.1938), ferryman from c.1890 to c.1930, a lady belonging to the Kent Family History Society researching the Glover family and Sarah Raven (not one of the Ravens from the Cedars). These were also connected with John Walton, a master tailor (army) and Chelsea Pensioner (d.1887), who was the first occupant of the draper's shop next to Hambrook's. I have been able to help some of these, but if anyone can offer any information I will be happy to pass it on. I have recently helped an American lady who believes her ancestors were the Crow family, owners of Snodland Court Lodge and who flourished here 1669 to 1732. It looks likely that the last one sold the property to John May senior before moving to America from London, but the connection has yet to be properly established. A gentleman from Sussex is enquiring about his ancestor William Shep-



herd Fowler, employed on Thomson's farm, related to a Baldwin. As I write this another query arrives from Australia with an interesting photograph of nine players from 'CCAF 1911-2'. I would guess this was a football club for Christ Church, but have never previously heard of one. Does anyone know if such once existed? It is quite likely because Rev. A. Pollok Williams was himself a keen footballer and sportsman at the time so is likely to have formed a team. 'Me' is thought to be Frederick Charles Langridge (c.1894-1939), but none of the others are identified. The picture seems to have been taken on 'Mr Champion's Field' (Woodlands Farm in the background), which he often loaned for community events. FCL was son of James/John and Sarah Ann Langridge, who lived at 1 Portland Place, then 21 Birling Road. He became the 'farmer' at Walnut Tree Farm. Birling, but died aged only 45.

One of the success stories has been that of Mrs Debra Buchanan from Australia who initially found Mayatts in our WWI list on our web-site. From this and our list of Mayatts she was able to confirm her link to the family, who also worked in the paper mills in the Cray valley. She has kindly provided an extended family tree and continues to send information as it appears. Recently she has made contact with others and has sent some early family photographs. The one shown is of John Phillips Mayatt and his wife Kate (née Spearing). John (b. 13 Feb. 1851 at St Mary Cray, was son of James (bap. Snodland 4 June 1820) and grandson of Joseph, the first Mayatt to arrive in Snodland from Buckinghamshire and who

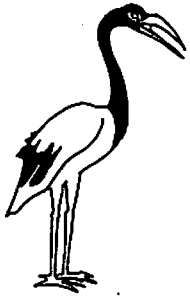
married Frances Hawks here in 1816. Often it is the people in the earliest photographs who prove difficult to identify. We would be grateful to make copies of any early family photographs, especially where, as here, the people can be identified.



Some time ago Mrs June Briggs kindly loaned her collection of family photographs of the Bateman family. Many could be named, but some could not, among them this couple, apparently grandfather and grandson. The older man might be William Bateman (1842-1913), grocer, draper, postmaster and parish councillor (and who made and sold some early postcards of Snodland).



THIS NEWSLETTER IS BEING DISTRIBUTED EARLY TO NOTIFY YOU OF THE EXTRA MEETING ON THE THIRD WEDNESDAY IN APRIL, CAUSED BY THE RE-SCHEDULING OF ROBERT RATCLIFFE'S TALK (WHICH HAD TO BE CANCELLED IN JANUARY BECAUSE OF THE SNOW).



SNODLAND HISTORICAL SOCIETY

Newsletter

Volume 7, Issue 3

Web-site: www.snodlandhistory.org.uk

September 2004

Correspondence

Correspondence and enquiries about the Society (including applications for membership) should be addressed to

Dr. Andrew Ashbee, 214, Malling Road, Snodland, Kent ME6 5EQ (tel 01634-243001; e-mail: aa0060962@blueyonder.co.uk);

or to the Secretary:

Mr. Neil Miners, 13 Gorham Close, Snodland, Kent ME6 5EZ; e-mail: neilminers@yahoo.co.uk

Subscriptions

Subscriptions for the present season became due on 1st September 2004. They remain at the same rates as before: £5 individuals (£2.50 aged 14-17); £7.50 joint adult membership; £10 family; £50 corporate. Cheques (payable to Snodland Historical Society) should be sent to the Treasurer, Mr. Brian Tansley, 11 Godden Road, Snodland, Kent ME6 5HF, or given to him at a Society meeting. Membership will cease if a subscription remains unpaid by 1 February 2004.

Meetings

Are held at the Devonshire Rooms, Waghorn Road, on Wednesdays at 8 p.m. Visitors are welcome at £1 per meeting.

6 October 2004. Annual General Meeting. Following the business we will explore Snodland in the 1840s, using the tithe map and schedule and the 1841 census as basic documents.

3 November 2004. Monty Parkin will give an illustrated talk: 'The A25 is Interesting'. This is part of his description: 'Although more familiarly associated with heavy traffic and hold-ups, the

stretch of the A25 between Ightham and Sevenoaks is actually full of historical interest. Travelling along this turnpike road from the 1760s one takes in the whole spectrum of society from the tramps and gypsies on Seal Chart to the villagers of Seal and the gentry at Wildernesse mansion. Here, distinguished visitors such as George III and the Duke of Wellington called and, later, the household of Lord Hillingdon, a typical Victorian 'banking squire', dominated the village. Enterprises such as Swift's Edge Tools, Seal Herb Farm and Greatness Silk Mill also feature, as do some interesting Arts and Crafts connections.

1 December 2004. It is exactly 100 years since A. N. Hambrook issued his first postcards of Snodland. The usual slide show will therefore concentrate on Hambrook's many postcards of the village, but will also touch upon the great series of Kent postcards issued by the Hambrook brothers which we have recently begun to scan and catalogue.

26 January 2004. Bob Ratcliffe returns to give another of his much-enjoyed illustrated talks, this time about Barges and Paddle Steamers on the Medway.

2 March 2005. Philip Lawrence will give the second of his two related talks on 'A Kentish parish in the 1870's - Cliffe at Hoo'.

6 April 2005. To be announced.

4 May 2005. Lt Col Mike Martin, late of the Royal Hampshire Regiment, will give a talk on 'The history of the Victoria Cross and its many anomalies'.

No. 21: Lists of Snodland Traders and Residents from Four Directories: 1851, 1903, 1934, 1938. Similar to pamphlets Nos. 4 and 5, but these are hitherto unpublished lists. £1.

No. 22: Memorials in the churchyard at Christ Church, Snodland (formerly Lower Birling). £2. During the early 1980s the writer and Mr. Keith Holdstock undertook a systematic survey to ascertain from all available evidence as much as could be learned about the placement of the graves. Names and some dates were recorded then, but not full transcriptions of the stones. Although the alignment on the ground is not always exact, Mr Holdstock drew up a table which is the basis for this booklet. The present survey was completed in May 2004. Many of the memorials have become virtually illegible in whole or part since the 1980s and some evidence recorded then has disappeared entirely. The parish of Lower Birling comprised those parts of Snodland to the south of the boundary stream (now under Rocfort Road), taking in Bramley Road, parts of Malling and Birling Roads and parts of Birling parish (including Ham Hill) which were nearer Snodland than Birling village.

Christopher Howick has written **A Stroll round All Saints Church, Snodland** which is currently being prepared for publication as pamphlet 23.

National School Log-Book

Mrs Davies, Headmistress at Roberts Road School, has kindly allowed me to borrow the earliest of the school log-books. This has now been photocopied and completes the series of copies we hold at the Museum covering all the National School log-books to 1930. I have indexed all the names. If permission is granted, a future SHS pamphlet or pamphlets comprising interesting extracts from the books will be made. This book begins in 1863, when Walter Rumble was headmaster, and continues to 1891. The earliest years cover the whole school, but the infant department was set up in 1868, gaining its own log-book, and the girls' department separated in 1877. Rumble was at first puzzled as to what to put in the book, and sought advice. But it was not long before he found it irritating: 24 Nov. 1864: 'Nothing has been entered since

Tues: 15th Nov. Why? Because I have nothing to enter but the number at school, the state of the weather, the hours in school, &c. As for the work, that is always the same. Such entries as I make can never be of use. The time taken up in entering them is wasted.'

Medway Gap Landscape Partnership

We recently received a notice via the Town Council of the above scheme. Denis Anstey kindly attended a pilot meeting at Upper Halling on the Society's behalf. We were told that 'The Medway Gap Landscape Partnership is currently working towards a landscape, heritage and public involvement programme to help conserve, enhance and restore the Medway Gap's landscape heritage. The Partnership will be submitting a bid to the Heritage Lottery Fund for £2 million in October 2004 to help us achieve actions identified to conserve the Medway Gap's distinctive landscape character.' We felt we should express an interest and offer what support we can, and have submitted some thoughts as the final text of the bid is prepared. With so much of our landscape under threat from various forces, it would be good if this plan could be put into effect. It has support from conservation societies, local councils and industry.

'The project aims to:

enhance and restore the local landscape heritage - including natural, industrial, ancient, cultural and farmed landscapes

support training for local people to help them maintain, conserve and enhance their landscape heritage in practical ways

increase awareness of local traditions linked to landscape heritage, through contemporary projects

increase public understanding, involvement and access to the Medway Gap's landscape heritage.'

We await further developments!

Australian War Memorial

In the December 2003 Newsletter we drew attention to the Australian War Memorial which features 'Snodland' on its list of 24,000 place names recording 'the origins of Australian Servicemen and women, many of whom were born overseas.' Mrs



Malling Road, Snodland.

Published by A. H. Hambrook Printer and Stationer, Snodland.

One of the first postcards A. N. Hambrook produced of Snodland (in 1904).

Avril Castle followed this up with enquiries to the Australian authorities, who responded with names of two persons born in Snodland who served in the Australian forces: (1) Ronald William Adkins, born Snodland, 24 Feb 1906, service no. 58633; next of kin: Lily Adkins; (2) Ian Whitworth, born Snodland 5 Apr 1949, service no. R94868; next of kin: Frederick Whitworth. Details via the Internet at http://www.naa.gov.au/The_Collection/recordsearch.html.

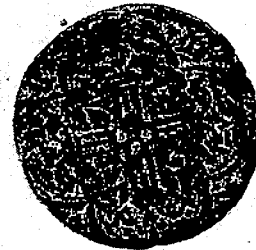
Museum

A display of 'Snodland in Victorian times' has run from April to September. We will replace this with a display of Hambrook pictures to mark the centenary of A. N. Hambrook's first pictures of Snodland in 1904. We have also begun collecting non-Snodland pictures of Hambrook Brothers' photos of Kent and already have over 100 scans of these. Judging by the numbering on the cards, there are more than 1300 in all, so there's a long way to go! We have begun files of pictures of Burham, Wouldham and Cuxton to add to those of Halling and Birling.

Some fine aerial photographs of Snodland and district have been donated by Mrs Trevor Large and Mr. Ben Baxter. Parts of the Downs, Burham and Wouldham, Leybourne and East Malling are included. Most were made in 1967

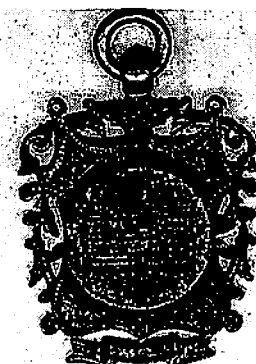
so precede much recent development.

Miss Ann Ware kindly gave a coin 'from a field in Snodland' which her father acquired around 1950. Not knowing what it was I took it to the History and Archaeology Show in June to show to various experts. It turns out to be a 'jetton' a coin often of French origin and commonly used in gaming. Our example is actually English, from the reigns of Edward III-Richard II (1322-1397). One side has a cross, the other a 'king



under a canopy'.

Thanks too to our members Iris Tobin and Bill Gowar for donating a badge probably issued at the opening of the Devonshire Rooms, and to Bill Wenham for a silver badge for good attendance at the National School. The



former has 'NCSS' on the reverse. The latter has a '1906' bar on a red ribbon and was awarded 'for perfect attendance and good conduct'.

A recent internet sale featured a Roman jug



which the vendor believed may have come from 'a Roman villa in Snodland'. In view of the doubt we did not pursue this (it eventually sold for £46) but did acquire pictures of it. It is quite likely that such an item was found at the villa in the 1920s and with other known artifacts remained in private hands rather than passing to a museum. It is difficult to ascertain the size, but the jug is probably quite small. There is no reference to it in official accounts.

Other Meetings

As the new season commences we have received notices of other local meetings which may be of interest:

Maidstone Area Archaeological Group meets on Fridays at 7.30 at Detling School (£1 for non-members):

17 September: Peter Dawson: 'Chatham Dockyard - Letters of Yesteryear'

15 October: Tony Norfolk: 'Kent's Bridges'
(19 Nov and 17 Dec: members evenings)

21 January: David Carder: 'English Timber Framing'

18 February: Catherine Edwards: 'Excavations at the Fremlins Site, Maidstone'

18 March: Andrew Richardson: 'The Jutes in Kent'

Kent County Council/CKS at the Lecture Theatre, Sessions House, Maidstone, at 6.30; £3 each

23 September: Peter Brandon: 'The North

Downs'

27 October: Lee Auly: 'Rationed Fashion' (wartime costume)

11 November: Liz Finn: 'Monks, manors and murder - the medieval charters of Canterbury Cathedral'

24 November: John Reymond: 'D Day Fortitude South' (Kent's part in the build-up to D Day)

15 December: Frank Gray: 'Historic Kent on Film'.

Competition

It was disappointing that no entries were received for the competition we organized. Nevertheless we hope to try again, but will try to ascertain the best time to run the event and perhaps change the format in some way if necessary.

Field names

During the last year Neil Miners has worked hard on drawing splendid maps based on the Snodland Tithe apportionment map and schedule. Copies of the map and list enclosed with this Newsletter were presented to those who completed the Boundary Walk in May. Neil has also produced three other maps coloured to show (1) Owners; (2) Occupiers; (3) Land Use of the parish in 1844. All these will be added to the displays at the Museum and will be on display at the AGM. We shall also use them in the talk then. They show much more vividly than mere lists how the various farms were distributed around the parish. Neil is now working on detailed maps of the village centre and on Holborough, which we hope to include in similar fashion with later Newsletters. Many thanks to Neil for all his efforts. The original tithe maps for Snodland and Birling are available for viewing at the Museum on CD-ROMs produced by the Centre for Kentish Studies. Denis Anstey is currently adding to our transcriptions of the Tithe schedules for all local parishes and these are also being added to the Kent Archaeological Society web-site at www.kentarchaeology.org.uk/research.



SNODLAND HISTORICAL SOCIETY NEWSLETTER

Volume 8, Issue 1

www.snodlandhistory.org.uk

December 2004

Correspondence

Correspondence and enquiries about the Society (including applications for membership) should be addressed to

Dr. Andrew Ashbee, 214, Malling Road, Snodland, Kent ME6 5EQ (tel 01634-243001; e-mail: aa0060962@blueyonder.co.uk);

or to the Secretary:

Mr. Neil Miners, 13 Gorham Close, Snodland, Kent ME6 5EZ; e-mail: neilminers@yahoo.co.uk

Subscriptions

Subscriptions for the present season became due on 1st September 2004. They remain at the same rates as before: £5 individuals (£2.50 aged 14-17); £7.50 joint adult membership; £10 family; £50 corporate. Cheques (payable to Snodland Historical Society) should be sent to the Treasurer, Mr. Brian Tansley, 11 Godden Road, Snodland, Kent ME6 5HF, or given to him at a Society meeting. Membership will cease if a subscription remains unpaid by 1 February 2005.

Society Meetings

Devonshire Rooms, Wednesdays, 8 p.m. Free to members. Visitors welcome at £1 per meeting.

26 January 2005. Bob Ratcliffe returns to give another of his much-enjoyed illustrated talks, this time about Barges and Paddle Steamers on the Medway.

2 March 2005. Philip Lawrence will give the second of his two related talks on 'A Kentish parish in the 1870's - Cliffe at Hoo'.

6 April 2005. A demonstration and slide-show about life in the Iron Age by the 'Cantiaci' Iron

Age Living History group. 'The group aim to represent life as it may have been from around 80 BC to the Roman conquest of 43 AD. Cantiaci members, wearing archaeologically correct clothing, demonstrate iron age crafts including metalworking, jewellery, spinning, weaving, natural dyeing, prehistoric cooking, basketry and pottery.'

4 May 2005. Lt. Col. Mike Martin, late of the Royal Hampshire Regiment, will give a talk on 'The history of the Victoria Cross and its many anomalies'.

Advance notice of other meetings

Civic Centre, Strood: Saturday, 30 April 2005: Local and Family History Open Day. 10 a.m. to 4 p.m. (This is the weekend of the Sweeps Festival.) Free entrance. Many local history societies will be present, as will the Kent Family History Society. We will have a stall and display.

Maidstone Museum: Saturday, 29 October 2005: The History and Archaeology Show. Following the success of the first show, another which draws exhibitors and societies from all over Kent. We will have a stall. Free entrance.

Pamphlet No. 23

A Stroll around All Saints Church, Snodland, by Christopher Howick is now available: 30 pp., illustrated, £2. All profits from the sale of this pamphlet are being given to the fund of the 'Friends of All Saints', which contributes solely to the maintenance of the fabric and insurance costs of this beautiful building. The text takes into account some new findings from the notebooks of Henry Dampier Phelps (see below!)

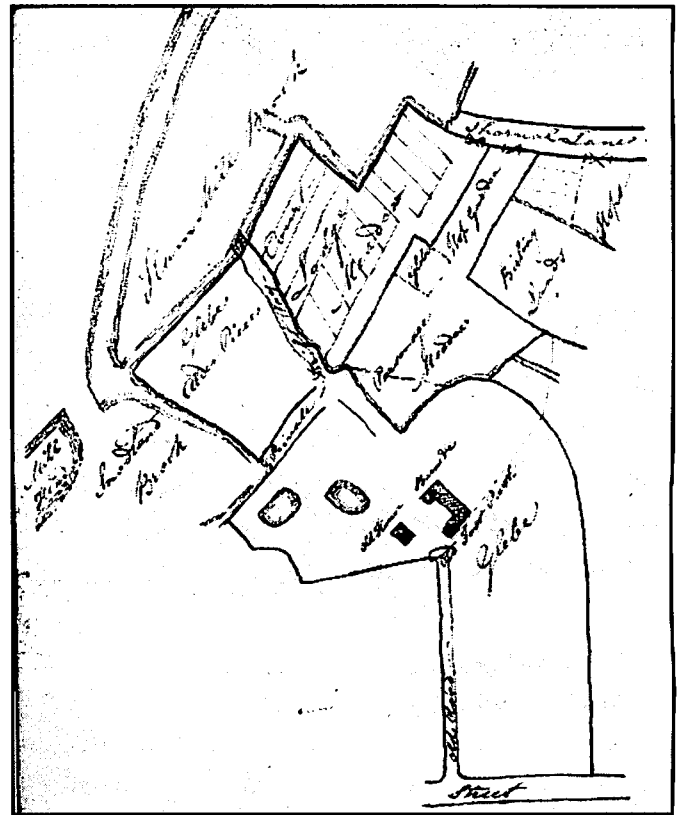
A treasure-trove of Snodland documents

As many members already know, in September the Society was alerted to a group of Snodland documents on sale in a Tonbridge bookshop and advertised via the Internet. The description showed they were important and it was decided to buy them, even though the cost of £1,000 was very high. We are very grateful to Snodland Town Council for subsequently granting £250 towards the cost. (We have also applied to the Snodland Partnership for a similar amount.) It would appear that they were originally part of the archive once held at the Rectory, but had disappeared by 1961, when this was catalogued by the Kent Archives Service. One suspects that the culprit was Rev. A. E. Speers (Rector 1947-1954), since some years ago another group of parish documents was returned from him through clergy contacts and were placed with Snodland records in the Medway Archives and Local Studies Centre. Because we have paid for them, we will retain the new batch at the Museum. The writings of Rev. Charles de Rocfort Wall indicate that he had seen them, but he makes little reference to their contents.

Most important are three notebooks compiled by Rev. Henry Dampier Phelps, Rector 1804-1865. The largest of them includes a detailed schedule of tithes compiled for him by a William Leonard in 1804 (to show the Rector what monies were due to him from this source). Further study and comparisons with other tithe lists will be needed before we can make sensible use of this material, but we will hope to publish our findings in due course. The rest of the text of the notebooks is being published in three small pamphlets, entitled **Notes on Snodland by Henry Dampier Phelps, Rector 1804-1865**, available from January 2005 at £1 each.

Pamphlet No. 24: Vol. I: All Saints Church and Churchyard. Contents: the path to the ferry; church windows; church seating; repairs and alterations made by Phelps; Rector's expences; removal of the market cross to the churchyard; some historical notes about the church.

Pamphlet No. 25: Vol II: Rights of Way,



Phelps's sketch-map of the Brook, part of his evidence about rights of way. The building shown is apparently the old rectory, vacated for the new one he built in 1814.

Boundary, Rules for the Brook, Charities. Contents: correspondence and sketch-map relating to the glebe and other land on Snodland Brook; the boundary marks at 13 June 1817 (mostly on trees!), with memories of some of them by parishioners; rules for the management of the Brook, 23 June 1817; copy of the commission's case against Brett Netter for not paying the Godden charity money, 11 April 1667 (the original document is now in the Museum); notes on May's charity; list of parish books, 1818.

Pamphlet No. 26: Vol. III: History, Flora and Fauna. Contents: historical notes on Snodland, largely gleaned from existing published histories: Domesday Book, Philipot, Hasted (see SHS Pamphlet No. 6), but with various additional notes by Phelps; lists of fossils, flora and fauna.

Other documents are:

The Charity Commissioners' document of 15 January 1868, following the sale of land in order

to rebuild the National Schools and revise the terms of May's charity.

A sworn statement by Edward Hawkes concerning the ownership of part of the land sold in aid of the National Schools: 20 July 1867.

Sale of a parcel of land from John May's Charity to Arthur Joslen.

Paper in Phelps's hand on the income of the Master of the School.

Two drafts of a letter in Phelps's hand about the footpath through the churchyard, duplicating the one in Notebook A.

A letter dated 11 March 1870 from George Lewthwaite of Adel, near Leeds, enquiring about the crucifixion on the pillar in All Saints which he had read about in the [Manchester] 'Guardian'.

A letter dated 8 December 1870 (signature illegible) on Kent Archaeological Society notepaper and from Maidstone Museum, concerning the identity of the figures in the 'Palmer' window in All Saints.

Waghorn

*Answers
Claremont
Aug 8 1875
Waghorn
The date of
my health
my immediate
departure for the
Church of England
one from attending
to any further business
that are my intention
I shall not be
favourable of an
hourly staff, by
my hand and
cooperation with
a. l. v. v. v. v. v.
with my
superior
the new campaign
interior quality
by the best
short change*

The increasing availability of library catalogues on the Internet has led to further discoveries of documents concerning Waghorn. We are acquiring copies as far as possible to add to our Waghorn archive. (a) Nottingham University has a fine group among the papers of Lord William Bentinck, one time Governor General of India, and has kindly supplied photocopies. I thought Waghorn's usual hurried scrawl was difficult to read until I came across a note from

Bentinck on one of Waghorn's letters (reproduced here)! It states that he can't attend to any public business since he is going abroad to restore his health (the note is written at the 'Clarendon Hotel' (presumably Gravesend) to Waghorn at Snodland. (b) Two letters from Waghorn to Richard Cobden, MP, in 1848. (Photocopies supplied by West Sussex Record Office). (c) Southampton University is microfilming for us three of Waghorn's pamphlets, including one previously unknown, published in Liverpool in 1835. (d) our member Graham Crouch has been very helpful in acquiring copies of pages from *The Times* which mention Waghorn. Still to be explored are (i) a book by Agnes E. Waghorn: *The Pioneer of the short and rapid route to India and the East* (Royal Geographical Society Library), not known anywhere else; (ii) *Lieutenant Waghorn's lecture at Bath, by invitation of General J. S. Wood, Lieutenant-General of the Tower* (National Maritime Museum); also documents at NMM relating to Waghorn and the P & O Company. I was delighted to find the full text of Emma Roberts' *Notes of an overland journey through France and Egypt to Bombay, London, 1841* on the Internet at www.gutenberg.org. This is a fine account of the trip she made in 1839 and mentions the help she received from Waghorn—and more particularly Mrs Waghorn, who recommended a particular servant and supplied beds and 'a very handsome canteen', the first real evidence that Harriet Waghorn accompanied her husband to Egypt and assisted him there. I have printed chapters III to VII which cover the journey between Marseilles and Aden.

As a contributor, I have had the privilege of three months' free access to the on-line *Oxford Dictionary of National Biography*. Waghorn's entry is very disappointing and I have written to the editor to point out a number of errors and omissions. The contributor unfortunately relied on Margery Sankey's book instead of original sources, which led to the problems. I am assured (and believe) that my corrections will be investigated and the on-line version will be amended as appropriate. At £7,500 the printed



Numbered 123, this is an early postcard of Hambrook Brothers ('HB's), in conjunction with the as yet unidentified firm of 'F&L'.

version will have to remain as it is!

Hambrook

2004 sees the hundredth anniversary of the first postcards of Snodland issued by Arthur Nethersole Hambrook, so we have mounted an exhibition in the Museum to commemorate the event. A. N. Hambrook does not appear in the 1901 census here, but had arrived by the time Kelly's 1903 Directory was issued. In the early years he had rivals like William Bateman and Mason & Sons and other photographers in local parishes, but his work continued for some fifty years. The last known prints are in the W.I. scrap-book of 1955, made from earlier issues. Hambrook had a printing works in May Street which supplied all kinds of local requirements. His brother Percy, coachman to the Hook family, lived in the coachman's house opposite 'Veles' and, at least in later years, the postcards were stored there. Regrettably, but understandably, all the plates and materials were destroyed about fifty years ago. Apart from the Snodland views, it appears that 'Hambrook Brothers' produced a vast series of pictures of Kent scenes.

At the Society's meeting on 1 December, we viewed a selection of both series. It is becoming clear that Hambrooks were major photographers of Kent scenes and we will endeavour to collect as many images and as much information as we can. After the meeting it was suggested that those

members who attend postcard fairs and the like could be armed with a list of the numbered Hambrook postcards which we already have, so as to help build the collection by filling the gaps. (We can scan/print the pictures for the Museum.) I will happily supply such a list to anyone who is interested, either by post or e-mail, and it can be revised and re-issued from time to time.

So far as the Snodland pictures are concerned, we are trying to catalogue and date them. We would be grateful for any information about Hambrook cards held privately so that

1. we can add images not in our collection
2. record any dates shown on the back of used cards
3. record the design on the back of each card
4. note the format of the captions

Again copies can be made for the Museum.

I meant at the time to thank the ladies who so kindly did the catering at the December 1st meeting. Our warmest thanks to Mrs. Brenda Ashbee, Mrs Janette Capon, Mrs Val Fiddes, Mrs. Julia Howe, Mrs Jeanne Pennington, Mrs Sue Tansley for providing all the refreshments, not forgetting the washing-up.

Web-sites

The burgeoning Internet makes it increasingly difficult to keep up with local history. Members might be glad of a few addresses of particular interest to us.

www.kentarchaeology.org.uk = Kent Archaeological Society. 'Research' gives access to lists of Visual Records, Monumental Inscriptions, Tithe schedules, Wills.

www.kentarchaeology.ac.uk = Kent Archaeological Society: articles on Kent history on-line (including our pamphlet 19 on early papermakers).

www.english-heritage.org.uk/nmr = National Monuments Record

www.imagesofengland.org.uk = listed buildings

www.cvma.ac.uk = stained glass in England (includes some of the lost glass from All Saints as well as present windows)

<http://ads.ahds.ac.uk/catalogue> = National Monuments Record excavation index

www.24hourmuseum.org.uk = details of museums around the country, including ours.



SNODLAND HISTORICAL SOCIETY NEWSLETTER

Volume 8, Issue 2

www.snodlandhistory.org.uk

April 2005

Correspondence

Correspondence and enquiries about the Society (including applications for membership) should be addressed to

Dr. Andrew Ashbee, 214, Malling Road, Snodland, Kent ME6 5EQ (tel 01634-243001; e-mail: aa0060962@blueyonder.co.uk);

or to the Secretary:

Mr. Neil Miners, 13 Gorham Close, Snodland, Kent ME6 5EZ; e-mail: neilminers@yahoo.co.uk

Society Meetings

Devonshire Rooms, Wednesdays, 8 p.m. Free to members. Visitors welcome at £1 per meeting.

6 April 2005. A demonstration and slide-show about life in the Iron Age by the 'Cantiaci' Iron Age Living History group. 'The group aims to represent life as it may have been from around 80 BC to the Roman conquest of 43 AD. Cantiaci members, wearing archaeologically correct clothing, demonstrate iron age crafts including metal-working, jewellery, spinning, weaving, natural dyeing, prehistoric cooking, basketry and pottery.'

20 April 2005. Philip Lawrence will give the second of his two related talks on 'A Kentish parish in the 1870's - Cliffe at Hoo', which had to be postponed from March because of snow.

4 May 2005. Lt. Col. Mike Martin, late of the Royal Hampshire Regiment, will give a talk on 'The history of the Victoria Cross and its many anomalies'.

Advance notice of other meetings

Civic Centre, Strood: Saturday, 30 April 2005: Local and Family History Open Day. 10

a.m. to 4 p.m. (This is the weekend of the Sweeps Festival.) Free entrance. Many local history societies will be present, as will the Kent Family History Society. We will have a stall and display.

Maidstone Museum: Saturday, 29 October 2005: The History and Archaeology Show.

Following the success of the first show, another which draws exhibitors and societies from all over Kent. We will have a stall. Free entrance.

New findings about ancient Snodland

In the past six months information has come to hand from three sources, which adds significantly to our knowledge of ancient Snodland.

(a) **One of the Phelps notebooks** includes the earliest account we have of the Roman remains in the village. Having mentioned the reference in Lambarde's *Perambulation of Kent* (1570) to William Tilghman digging up an urn on Barrow Hill, he goes on:

' Many other proofs of the Romans having a Station in this Parish still remain; especially one of their Roads, which now forms our Northern Boundary & runs in a line from the Hills to the River where they crossed & where the Road is again found pointing directly up from the River. (* In digging on the Wouldham side, to make a sheep wash, it was found that the Bank of the River had been paved to admit of a Ferry & facilitate crossing at low water.) The passage itself is no longer used: but even the Names of the places correspond: this side of the Water is called Holborough & the opposite Scarborough. The principal traces, however, of the Roman Station are in the Fields to the North of the Church, where many extensive foundations of their Build-

ings yet remain covering many acres of Land. Besides the great number of their Bricks which were used in building the Church, many Waggon loads have been ploughed up within these few years. And some years ago a Bath 16 feet by 12 was discovered in a high state of preservation; it was extremely well stuccied & had a pipe from it running into the Medway. In this field many Roman Coins have been found & the Meadow beyond is called Stone Graves Meadow - no doubt taking its name from the circumstance of burial places built with stone having at one time or other been found there. In the year 1819 Two Roman Urns were discovered in other parts of the Parish. One was found in the Parsonage Meadow, in cutting a new Ditch (near which a clump of Hollies are planted) it was filled with ashes & burnt Bones, but was broken to pieces in digging. It seemed to have been the Urn of a common Soldier, as the Pottery was of the common kind, of a bluish black colour, & coarse make. The other was found in grubbing up a hedge, near the Windmill, with the skeleton of a Girl or Young Woman lying near it. This Urn, also, was broken to pieces & would not have been noticed at all, but for the few bones of the skeleton which remained whole, & particularly the Skull, drawing the attention of the Labourer to it, & led to an examination of the spot by myself, where I found pieces of the Urn & some ashes. The Skeleton lay at full length near the Urn, & we know that the Romans did not often burn the bodies of the Women.'

So two more Roman burials are added to those previously recorded here.

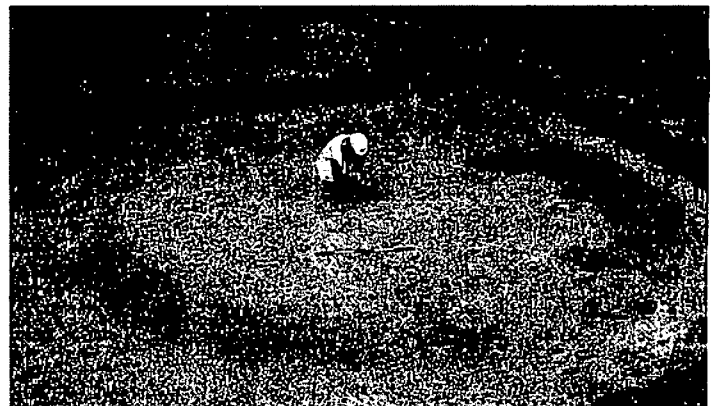
(b) The site of the new roundabout on the Halling border. Two digs took place here, the first in June-July 2003 and the second in June 2004, by the University of London Archaeological Unit/Archaeology South-East. The site is close to the ancient road from the downs to the river mentioned above by Rev. Phelps. Lafarge Cement UK has kindly donated the finds and associated paperwork to the Museum, where a display of some of the more significant items can be seen.

33 pieces of worked flint 'of later prehistoric date' include a side scraper, the only obvious tool. Various pits and ditches were recorded. One contained

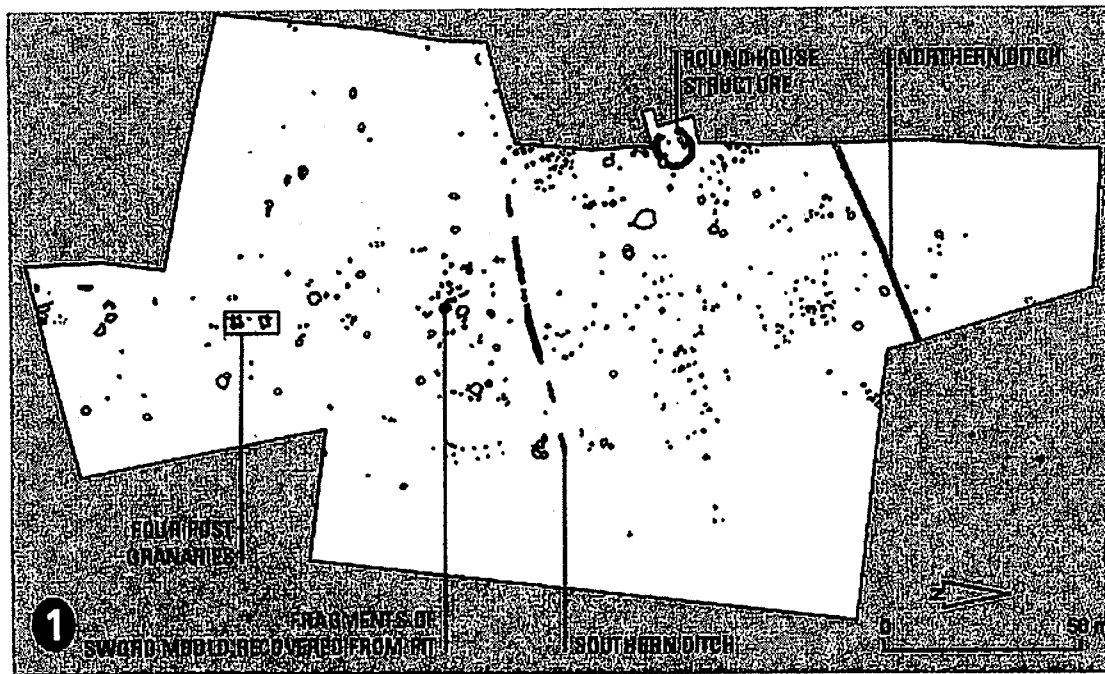
'a significant quantity of charcoal on the base of the pit (storage pits were habitually sterilised by fire before use).' A large fragment of a rotary quern and some smaller pieces are further evidence of grain processing. The 261 pottery fragments are of Late Iron Age and mid-first century Roman pottery. There is nothing which need be later than AD60/70. All the fragments are small and have been classified in 19 types. Among the most interesting items are some pieces of coarse 'Belgic' grog-tempered ware (LIA-AD50/60), some fine Hoo and Upchurch pieces, and 90 pieces of a 'neck-cordoned jar in polished fine-grog-tempered ware (LIA-c.AD60)'. This was possibly a cremation pot, but the acidity of the soil has destroyed all trace of bone. It is believed that there were changes in the field system here, perhaps when the Snodland Roman villa was established. One piece of South Gaullish Samian ware 'of a type that ceased being produced very soon after 43AD, indicates that the area was one of the earliest to come under Roman influence'. Such pieces are rare in England.

(c) The field behind Holborough Road, part of the site for the new housing development, excavated and recorded by the Canterbury Archaeological Trust, 21 July to 21 September 2004.

At least one major roundhouse was noted. About 500 cut features were identified, including at least five four-post structures. Evidence of other post holes probably represented drying racks, pens, fences or stand alone posts. 83 'pits' were identified and excavated. 14 of these containing charcoal and calcined bones were sited mostly round the perimeter of the settlement. A few pottery sherds were nearby. Of two linear ditches aligned east-



Traces of the Iron Age roundhouse



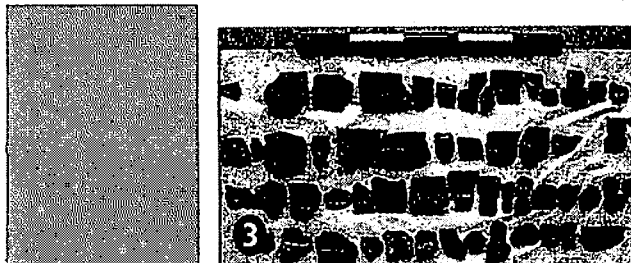
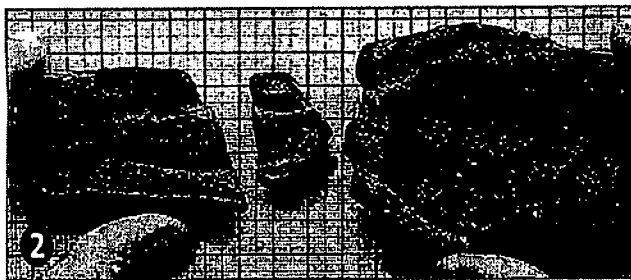
here. One pit 'contained a large assemblage of clay mould fragments ... of national importance ... representing the clay casing for a sword manufactured c.3000 years ago in the Late Bronze Age [which] will without doubt place Holborough Quarry as a 'type site' in the archaeological literature for years to come.'

The excavation reports for (b) and (c) are held at the museum and can be seen on request.

west, the northern one seems to have defined the northern boundary of the settlement; the other perhaps separated domestic and working areas. 'Amongst the finds was a large collection of Late Bronze Age flint-tempered pottery and a number of baked clay loom-weights, testifying to the manufacture of woollen textiles. A large number of animal bones recovered from the pits clearly indicate the presence of domesticated animals; carbonised peas and grains also indicate the growing of cereals and vegetables.' The most important find was evidence for metal working

Hambrook pictures

Members have been keeping a lookout for these and we have added several scans and original photos to our collection. Mr Keith Wakeling kindly loaned items from his collection to us and we continue to bid via e-bay on the internet. We are not always successful in this, since I set a relatively small upper limit on our bids - after all there seem to be 1350+ pictures to look out for! - but I can copy the images from the screen so that we have details for future auctions/searches. There are some fine hop-picking photos.



The clay mould fragments for the Bronze Age sword of c.900 BC.

Cemetery

Now that the surveys of the churchyards of All Saints and of Christ Church have been completed and published, it is time to pluck up courage to tackle the plethora of memorials at the Cemetery. We often get visitors, particularly from distant places, who are anxious to trace burials there. Frequently they are unaware whether or not there are memorials for their loved ones, nor where the plots are situated.

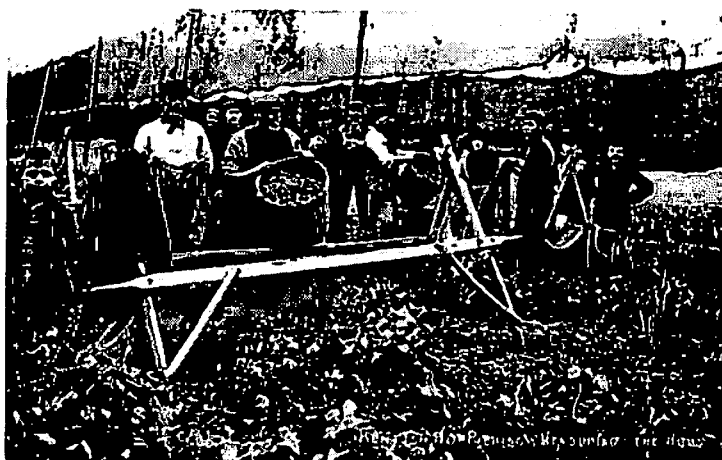
The work can be done in stages, surveying each segment in turn. Burials at the cemetery are not neatly arranged in successive plots, but initially were spaced out, often with a vacant plot between. Sometimes these were for relatives, but at other times these were revisited more than once

in later years for unrelated burials. Some plots were bought. Also there were two large areas for child burials, thankfully now rarely needed. A first step in the project has been to digitally photograph the cemetery map at the Council Offices. This is not entirely up-to-date, but will serve our purposes. It shows the numbers of the graves only. I am currently putting names to the numbers for the first segment (from information in the burial register). When this is done we shall then be able to mark on the list which graves have memorials and transcribe them. The results can then be published, probably in several volumes, in our Registers series. Anyone willing to help in this project will be very welcome. I can provide a guide sheet and list (ready soon!)

The Museum

We have given the museum something of an overhaul. Many of the exhibits were changed or re-mounted during the Christmas break and we are continuing to clear up some muddled corners. Bob Coomber has kindly provided some new shelves and assembled a large desk which was generously donated by Mrs Joy Booth. This has enabled the computer, scanner and printer to be moved from the back room to the main desk, making it easier for anyone using them to greet visitors, and putting much of our information in one place. This in turn has increased the space for visitors looking at our collection of picture files in the back room. The Hambrook exhibition will continue until at least June-July, as will the smaller one commemorating the opening of the new surgery.

Maidstone Area Archaeological Group are visiting Snodland and the museum in early May. They will have an opportunity to see many of the Roman villa finds which they themselves excavated, as well as touring All Saints church and optionally Paddlesworth.



Two of Hambrook's fine coloured series of hop-picking pictures



above: Willow Walk, on the Brook / below: East Malling





Snodland Historical Society Newsletter

Volume 8, Issue 3

www.snodlandhistory.org.uk

September 2005

Correspondence

Correspondence and enquiries about the Society (including applications for membership) should be addressed to

Dr. Andrew Ashbee, 214, Malling Road, Snodland Kent ME6 5EQ (tel 01634-243001; e-mail: aa0060962@blueyonder.co.uk);

or to the Secretary: Mr. Neil Miners, 13 Gorham Close, Snodland, Kent ME6 5EZ; e-mail: neilminers@yahoo.co.uk

Treasurership and Subscriptions

At the last AGM Brian Tansley gave notice that he would resign from being the Society's Treasurer at 31 August 2005. We thank Brian very much for his dedication and competence in holding this post for several years - the Society's funds have been in safe hands and he has sorted out many errors made in passing by the Chairman! During the year the Committee has approached several people, hoping to find a successor to Brian, but without success. We would warmly welcome someone offering to take on the task at the forthcoming AGM. Brian has offered to help them settle in and can supply technical expertise if required. In the meantime the Committee has agreed that we will have a Membership Secretary who will deal with the subscriptions part of the job. Mrs Brenda Ashbee is willing to do this and will collect subscriptions at meetings (or they can be sent to her at 214, Malling Road, Snodland, Kent ME6 5EQ). These are unchanged at £5 single, £7.50 joint, and £10 family membership for the year 2006-7.

Society Meetings

Devonshire Rooms, Wednesdays, 8 p.m. Free to members. Visitors welcome at £1 per meeting.

5 October 2005. AGM. Followed (a) by a showing of 'The Waghorn Story', an audio-visual presentation by Rudi Jeidel of the Philatelic Federation of South Africa (30 minutes). Although this is particularly concerned with the types of hand-stamps found on surviving items sent by mail via The Overland Route, it is an excellent introduction to Waghorn and shows some material which as far as I know is not held by any of the likely repositories in England. (b) Andrew Ashbee will give a short illustrated talk on the stained glass windows of All Saints church past and present.

2 November 2005. Monty Parkin makes a welcome return to talk on 'Pioneers of Flight in West Kent'. These are really early. He includes Henri Salmet's visit to Paddlesworth, but adds that '1912 comes at the end of my story.'

7 December 2005. The usual slide show of newly acquired pictures at the Museum and more of Hambrook's 'Kent Series'. Seasonal refreshments will be provided as usual.

25 January 2006. Tony Farnham, Chairman of the Society for Sailing Barge Research, will talk about barges in their heyday, particularly on the Medway and Swale.

1 March 2006. David Carder, a lecturer for the WEA, will give an illustrated talk on timber-framed buildings.

5 April 2006. To be arranged.

3 May 2006. To be arranged.

We hope one of the later talks will be given by Professor Sebastian Strobl. However, Professor Strobl is shortly leaving his post as head of glass conservation at Canterbury Cathedral to take up a new position at the University of Erfurt,

Germany. He has suggested I get in touch with him again early in the new year in the hope that we can arrange something outside his term-time duties, when he plans to be in England.

The History and Archaeology Show

Following the success of the first show in 2004, another will be held at Maidstone Museum on 29 October 2005, 10 a.m. to 4.30 p.m. Details of exhibitors, which will include our Society, on the Kent Archaeological Society's web-site: www.kentarchaeology.org.uk . Free entrance.

Publications

Pamphlet No. 27 [32 pages, £2] should be available by the time of the AGM. It is the first of an intended series of **Selections from the National Schools [Brook Street] log-books**. This one covers from the first entry in 1863 to 1877 and is drawn mainly from the first book, with some additions from the first Infants' log-book which was started in 1868. The intention is to give a cross-section of the more interesting entries and provides a good impression of school life in Snodland at that time. The yearly reports by Inspectors show the staff battling to improve both the education of the pupils and the conditions in which they worked - with very limited success it has to be said.

Additionally we will publish lists of the names appearing in the log-books (and these will also be added to our web-site). Three lists have been made so far, to be included in our 'Registers' series. Presence of names in the log-books depends very much on the whims of the teachers making the entries. Some are quite good at including names, while others are content with 'three children admitted'. Our lists will give names, dates and reasons for the appearance in the log-book: 'admitted' or e.g. 'Girls darned stockings: Mary Wray the best hand.'

Further registers are being transcribed. No. 5a in the series will be available by the time of the AGM: **A list of baptisms at Christ Church, 19 November 1893 to 31 December 1911**. [26 pages, £2]. This will be followed by a continuation of the same register to 1922 and one of All Saints baptisms 1902-1911. Using

the available plan a list of burials in the South-East segment of the cemetery has been made, but no attempt has yet been undertaken to match this with surviving memorials.

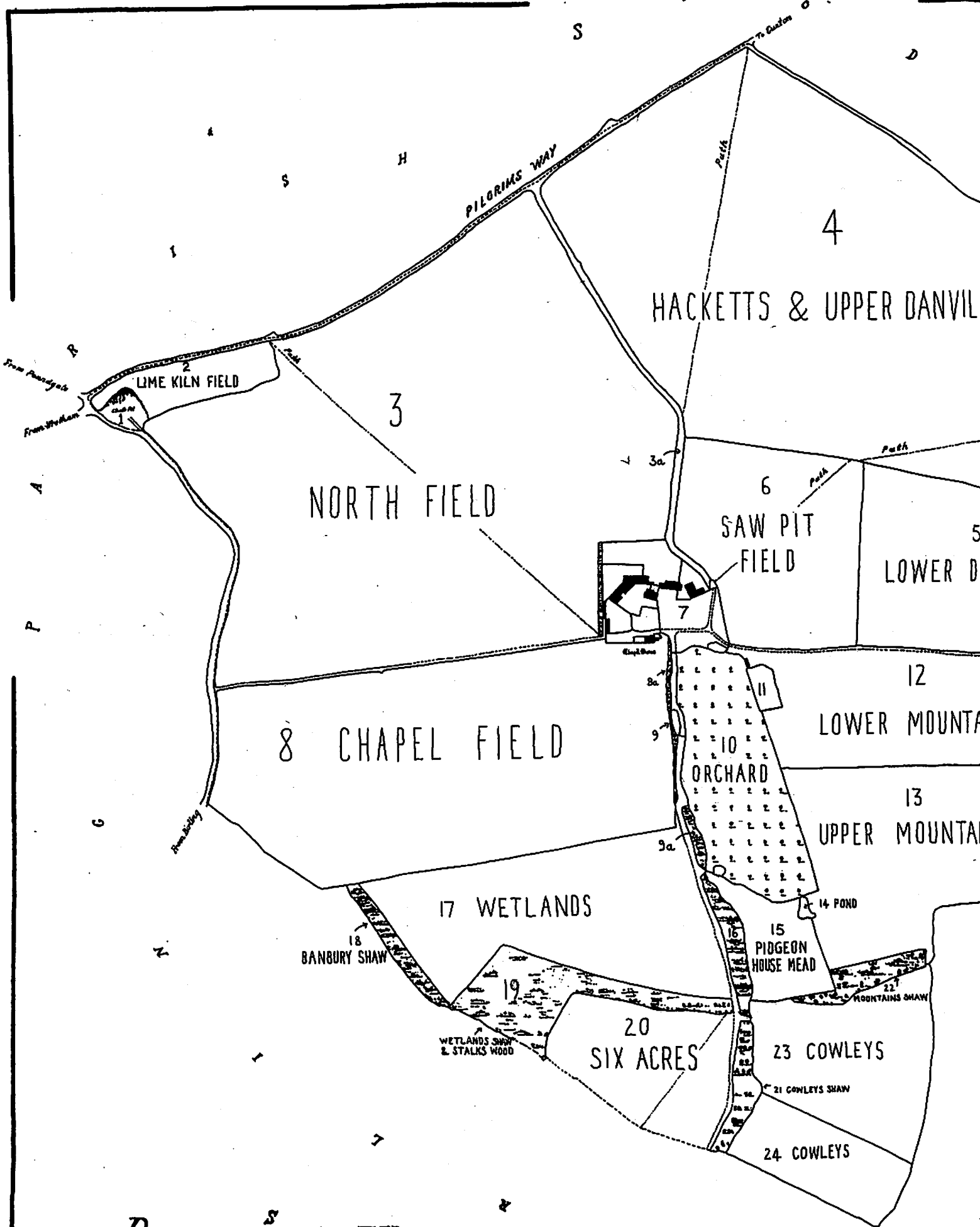
Miscellaneous news

Twice this summer Snodland has been visited by TV crews and presenters and we were contacted for information. The first occasion was for a programme about the **Pilgrim's Way** (recently shown) where the presenter Kaddy Lee-Preston crossed the river on foot at Snodland.

The other was for a programme in the 'House under the Hammer' series, due to be shown in the New Year. Snodland residents are aware that the **New Jerusalem church** has been sold and that the new owners hope to be able to convert the interior to a house and to live in it. We wish them well in their endeavours. Already the exterior has been cleared to a large extent, but the interior presents quite a challenge with much lumber being left by the previous owner to be sorted and removed. The new owners have been in touch with us and have already begun research in to the history of the building and the Hook family. They are taking a keen interest and in due course we will



The interior of the New Jerusalem church, 1900, showing the spectacular gas lights. Today only the wooden bases of these remain.



PADDLE^SWORTH

HACKETTS & UPPER DANVILLE

NORTH FIELD

SAW PIT FIELD

CHAPEL FIELD

ORCHARD

WETLANDS

BANBURY SHAW

PIGEON HOUSE MEAD

SIX ACRES

COWLEYS

COWLEYS

From Pudding
From the Man

To Dunton

From the Mill

MOUNTAINS SHAW

WETLANDS SHAW & STALKS WOOD

21 COWLEYS SHAW

PADDLE^SWORTH

THE SNODLAND BOUNDARY WALK Sunday 15 May 2005

PADDLESWORTH TITHE MAP 1845

In 1845 when this map was produced, Paddlesworth Parish consisted of three separate areas: the main area around the farm buildings and chapel (shown in the map), The Hamlet of Dowde and The Rectory of Dowde. Dode and Paddlesworth had been united in 1367 by the Bishop of Rochester because Dode had been deserted for fifteen years due to de-population following the Black Death.

The main area of the Parish surrounding the chapel and the Rectory of Dowde (a small envelope-shaped piece of land centred on Dode Church) were joined to Snodland in 1888. However, The Hamlet of Dowde was allocated to Luddesdown Parish. This may have been enacted following the Divided Parishes Act 1882 that led to thousands of detached portions of parishes being swept away and deemed included in the parish surrounding them. It is unclear why Paddlesworth was not joined with Birling Parish, or why the Rectory of Dowde was not joined to Luddesdown.

Some of the Field names plotted on the map can be explained. The Chalk Pit is of very old origin and Lime Kiln Field indicates the production of lime predating the cement industries. Mountains may be a corruption of Monks who owned land in Paddlesworth in the Middle Ages. Likewise, Cowleys may be derived from Cows Lea (Cows meadow). Even today Wetlands becomes waterlogged following wet weather and Stalks Wood has survived although the ribbon joining Cowleys has been lost. The boundary of the Orchard now marks the extent of the excavations that have become Kingfisher Lakes. The origin of Banbury Shaw, Hacketts and Danvill are unknown.

Paddlesworth has one other point to note- its fields are huge. North Field (53 acres), Hacketts and Danvill (48 acres) and Chapel Field (29 acres) dwarf most of the fields in Snodland Parish. Again it is unknown why Paddlesworth had -and still has- three massive fields!

1 Chalk Pit	Pt	12 Road in Lower Mounitains	R
2 Lime Kiln Field	A	13 Upper Mounitains	P
3 North Field	A	14 Pond	Wt
3 Road & Waste in North Field	R	15 Pigeon House Mead	P
3a Road to House	R	16 Shaw	Wd
4 Hacketts & Upper Danvill	A	17 Wetlands	P
5 Lower Danvill	A	17 Road on Wetlands	R
6 Saw Pit Field	A	18 Banbury Shaw	Wd
7 Homestead	S	19 Wetlands Shaw Stalks Wood	Wd
8 Chapel Field	A	20 Six Acres	P
8 Waste in Chapel Field	Wa	20 Road in Six Acres	R
9 Road and Pond	Wt	21 Cowleys Shaw	Wd
9a Shaw	Wd	22 Mountains Shaw	Wd
10 Orchard	O	23 Cowleys	P
11 Stackyard	S	24 Cowleys	P
12 Lower Mountains	M		

Key: Pt Pit; A Arable; R Road; S Sites; Wa Waste; Wt Water; Wd Wood; P Pasture; O Orchard; M Meadow.



be able to take photographs of the memorials and other interesting features. These have to remain because they are listed, but the owners are pleased to keep them anyway. I had the opportunity for a quick 'viewing' when the church was open before the auction. I had hoped to find some trace of the archive which once was housed there, but it has gone, clearly removed (but I guess not destroyed). The search for it continues, but at least we have a detailed list so know what we are looking for.

The **Medway Gap Partnership** was successful in gaining a lottery grant of 1.6 million pounds to help preserve and develop the natural history and heritage features of the area. More detailed plans are to be drawn up in the course of the year. I have asked David and Margery Penney to compile a list of the flora and fauna of our parish for the Museum, which they have agreed to do, and this will be a part of our contribution to the scheme. We will also be able to provide and research information on the industrial history: the scheme is focussing on the cement industry.

Members will be saddened to learn of the death of **Derek Saxby** early in September. He had been ill for some time. Derek was a committee member for some years and we valued his contributions to discussions. Walking his two dogs daily he got to know what was going on in the village and was able to report developments as soon as they happened. He also had a particular interest in the armed services and their connections here.

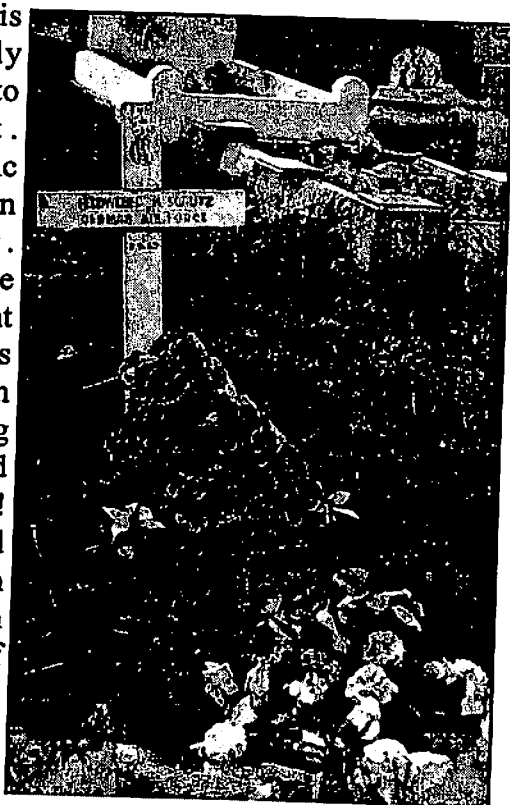
With this issue Neil Miners has kindly produced another of his maps based on the **Tithe return**. This one is of the main part of 'Paddlesworth' in 1845; two other parts 'The Hamlet of Dowde' and 'The Rectory of Dowde' will follow.

The Medway Archives and Local Study Centre has been putting all the **parish registers** in their care on-line. These are images of the actual pages. Their web-site is one of the finest of its kind at cityark.medway.gov.uk [NB: no 'www' in the address.] You can now see all the registers for All Saints, Snodland to 1966 and

for Christ Church, Lower Birling to 1969. (The earliest All Saints registers have yet to be scanned because the books are in poor condition and have to be repaired before the work can be carried out. However, all the information from these is already available at the Museum and on our web-site.) On the home page click on 'Medway Ancestors' or 'Parish Registers' either of which will take you to the list; then scroll down to the parish required and click on 'images'. For a superb selection of pictures of the Medway Towns and district go the 'Cityark Imagebase' and then the Couchman collection.

Museum

There is relatively little to report. Attendance remains steady. We have had recent visitors from Hong Kong and Australia! A small exhibition has been made of Snodland during World War II.



The grave of Herr Schutz (formerly in the cemetery), a pilot shot down and killed on 2 September 1940. His remains were later repatriated to Germany.

that photographs were rare at the time since no film was generally available, but there is a good cross-section of documents. More pictures have been added to our Hambrook collection, mostly of Kent rather than of Snodland. He travelled widely! Mr Semark has recently given us a number of interesting items:

Photographs of scouting in the 1950s.
 A signal lamp from the Second World War.
 An aeroplane compass
 Five clay pipes
 Two fossils

Next year we will have an exhibition to commemorate the great Paper Mill fire of 1906.

Waghorn

Although Waghorn's name is known in Snodland and the Medway Towns, it has largely disappeared from view in the rest of England. Those most likely to know of it are philatelists, for the documents sent 'Care of Mr Waghorn' by the Overland Mail are highly prized by specialist collectors and command high prices - too high for us to bid for when they come to auction. Less than 200 pieces are known today and the dates and hand-stamps give us much information about the service Waghorn provided. The last few months have shown that he still has an international following - in spite of the disparaging entry in the new *Oxford Dictionary of National Biography* mentioned in a previous Newsletter. A South African account will form part of our AGM. We have also acquired a DVD from France called 'La Nouvelle Malle des Indes' - 'a marvellous adventure on the route to India' - which combines with another about a French botanist to give 3 hours 28 minutes of swashbuckling Waghorn adventures. 'What adventures' says the blurb. Certainly imagination has played a major part! A Chinese lecturer at the University of Lancaster has been in touch, because he is studying Waghorn's influence on trade to the Far East. And now a Canadian gentleman has very kindly sent copies of a number of items to add to our Waghorn collection:

Photographs of the statue at Suez.

Photocopies of Chapter IV from *Stamps of India* (3rd edition, 1968): 'Overland Route to India'.
Illustrated London News, 21 May 1842 and subsequent issue: 'Waghorn's Overland Route from India' with illustrations.

Chambers' Edinburgh Journal 13 December 1845: 'Lieutenant Waghorn and the new land route from India'.

'The Mediterranean Mails' (Philatelic Specialists

of Canada, 1993.

'Care of Mr. Waghorn: India': Indian Stamp Journal.

I find that the Medway Archives has a complete run of 19th century *Illustrated London News* and the 1850 *Household Words* article on Waghorn.



The statue of Waghorn at Suez. The upper picture appears to commemorate the moment when the statue was installed in 1872. 'Wagam' in the lower one is found on more than one similar image!



Snodland Historical Society Newsletter

Volume 9, Issue 1

web-site: www.snodlandhistory.org.uk

December 2005

Correspondence

Correspondence and enquiries about the Society (including applications for membership) should be addressed to

Dr. Andrew Ashbee, 214, Malling Road, Snodland Kent ME6 5EQ (tel 01634-243001; e-mail: aa0060962@blueyonder.co.uk);

or to the Secretary: Mr. Neil Miners, 13 Gorham Close, Snodland, Kent ME6 5EZ; e-mail: neilminers@yahoo.co.uk

Subscriptions

Any unpaid subscriptions may be sent to Mrs Brenda Ashbee at 214, Malling Road, Snodland, Kent ME6 5EQ, or given to her at Society meetings. Membership will lapse if a subscription remains unpaid at February 1st 2006.

Forthcoming Society Meetings

25 January 2006. Tony Farnham, Chairman of the Society for Sailing Barge Research, will talk about barges in their heyday, particularly on the Medway and Swale.

1 March 2006. David Carder, a lecturer for the WEA, will give an illustrated talk on timber-framed buildings.

5 April 2006. To be arranged.

3 May 2006. To be arranged.

Kent Place-Names

We are delighted that the Kent Place-Names group have accepted our invitation to hold their annual meeting in Snodland. This will be on Saturday, July 15th, 2006 at the United Church, morning and afternoon. We hope the opportunity

will be taken to study and explain some of our local names. Distinguished and expert speakers will participate and some of our members may wish to attend what promises to be an interesting day.

England's Past for Everyone

Dr Andrew Hann spoke to us briefly about the above project in October. He has sent me the following for inclusion in our Newsletter. "The Victoria County History's 'England's Past For Everyone' (EPE) is an exciting new venture, intended to help widen access to the VCH's existing red volumes of parish-by-parish local histories, and involve the wider community in researching and writing new local history materials. The aim is to produce publications that are both engaging and authoritative, drawing on local knowledge and expertise as well as the work of professional historians. The research will be made available both online, via the VCH website, and in paperback as part of a new VCH Studies series of accessible local histories. EPE is a national programme, with projects underway in ten counties spread across the country from Durham to Cornwall, and is supported by a £3.4m grant from the Heritage Lottery Fund. This is matched by contributions from local sponsors, who in Kent include Kent County Council, the University of Greenwich, Kent Archaeological Society, Kent History Federation and the City of Rochester Society.

Andrew will be based in the Medway area, and will initially focus his research on a group of eight parishes in the lower Medway valley (Aylesford, Burham, Snodland, Wouldham, Halling, Cuxton, Strood and Frindsbury), looking

specifically at processes of industrialisation during the eighteenth and nineteenth centuries and their impact on the local environment, economy and culture. Special attention will be paid to the emergence of new industries such as cement, brick making, papermaking and engineering, and their relationship with older activities such as ship and barge building, lime burning and, of course, agriculture. The links between these communities and the Medway towns, other parts of Kent, and London will also be considered. This material will be published as a paperback volume entitled 'People and Work in the Lower Medway Valley, 1750-1900'. In the longer term it is hoped to broaden the chronological and geographical scope of the research, one possibility being a study of early-modern Rochester and its hinterland.

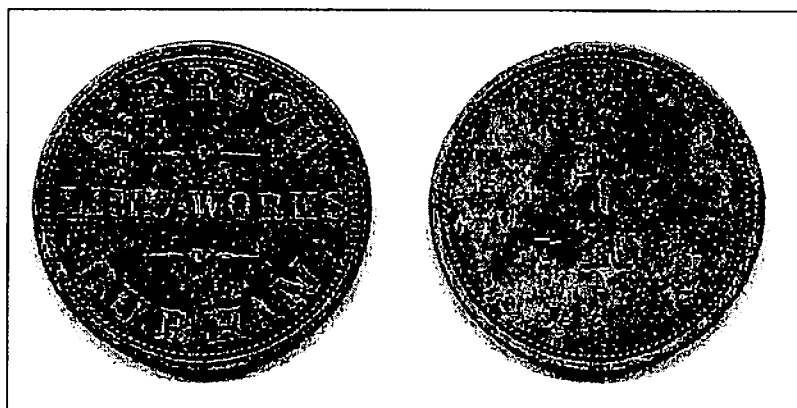
The participation of local people in the production of new local history resources is a central aim of the EPE programme, so there will be plenty of opportunities to get involved in the research. A team of volunteers is currently being recruited, and will meet for the first time in early December. Volunteers are needed to assist with all aspects of the project including archival research, building surveys, photography, website maintenance, and the writing of short articles for the paperback volume. Andrew will be pleased to hear from anyone who is interested in the project and would like to know more. He can be contacted on 01634 202724, or mobile 07776183310, or by email at ha81@gre.ac.uk."

That was written some weeks ago. I have been in regular touch with Dr. Hann since then, as his plans are formulated, and have recently received a more detailed scheme (which can be seen at the Museum). I have offered the use of the Museum as a base for any suitable part of the project. Negotiations are currently in hand with BCI/Lafarge to gain access to their archive (which has been transferred to Snodland) and this may be one area which can be researched here. We have already completed a good deal of research and have the information to hand for several other areas which the project will cover, although some of these will need converting to compatible

format. Any members wishing to be involved should let me know and I can provide further details.

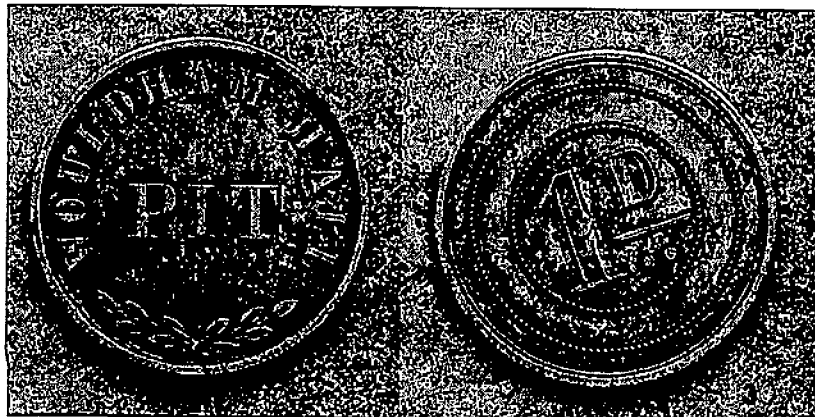
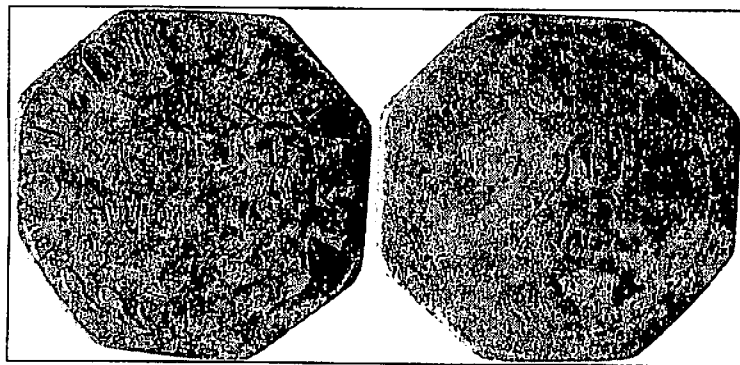
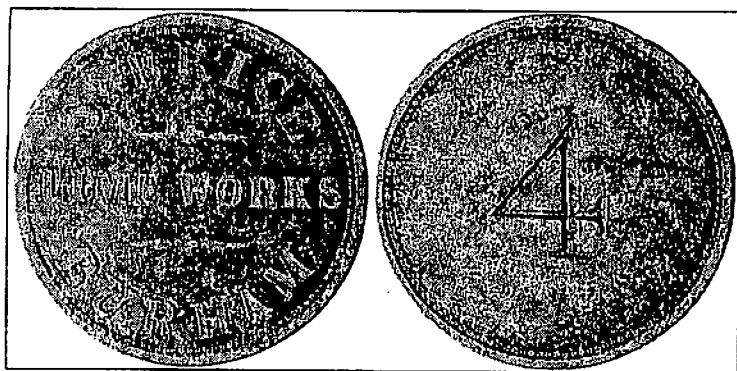
Mystery tokens

Earlier this year I was contacted by Mark Smith of the National Mining Memorabilia Association concerning some tokens which they had acquired, but about which they knew nothing. Although Mark lives in Newcastle-upon-Tyne, he was able to visit our area in November while working in Essex and took the opportunity to come to the Museum, where he spent a fruitful couple of hours sifting through our records and pictures. If you are able, do visit their web-site at www.mining-memorabilia.co.uk, which has some fascinating items on display. Under 'Mystery Items' you will find a token of 'S. Brice Lime Works Burham' with a '1' on reverse:



A Solomon Brice is known to us from the 1841 census, where he is the farmer at Ladd's farm with his wife Mary and six children, including another Solomon, born. c.1833. They had gone by 1851, but a succession of Solomon Brices (beginning with the son) became established as extractors of clay from the Medway. They had an office in Rochester and dug the clay at Hoo on the Medway and at Rainham, where they lived. Mark believes that Solomon Brice was also involved with Woulham Hall cement works (before Peters), but we have found nothing to confirm this at present. However, the clay was used in the cement-making process, so a link is quite feasible. The firm of Solomon John Brice had around forty barges and employed a hundred

'muddies' to dig the clay straight into the barges. They were very skilful at this, but it was one of the toughest of all jobs. It was well paid, and 'muddies' were a closed community, seldom letting an outsider into their circle. They worked in all weathers and had a reputation for patronising the local pubs and also had special huts at work to which they could retire for warmth and refreshment. Mark believes the token dates from around 1880, but what was it for? Using comparisons with others of the kind, he thinks it was probably issued by the firm and helped the holder pay for a drink in a local pub. Another possibility he considered during his visit is that it was part-payment for a ferry trip. Given the conditions of work noted above, this seems less likely. Here are other tokens acquired since the first one:



There is also a Brice 3d. one. The Wouldham Hall tokens show that they were used in the lime/cement works too. I've asked at the Medway Archives and Local Study Centre, but they have never seen anything of the kind. Can any member throw any light on the subject?

Possible outings

At the recent History and Archaeology Show at Maidstone Museum, we received an invitation from Cranbrook Museum to visit them one summer evening. This would be a special opening for us and they would provide a guide. The Museum has twelve rooms (in a former house). I have a brochure which can be viewed at our Museum and I will bring it to meetings. Probably the best idea is to plan for a visit on a Wednesday evening (say the first of the month in June). Cost of entry is £2, with transport to be added. I will provide a list at the next two meetings for anyone that it interested to sign, and we will work from there.

Also, following the illustrations of the windows of All Saints at our AGM, it has been suggested that some members might like to visit the church for a guided tour. It is easier to see where everything is 'on the ground'. I will be happy to do this, so again suggest (provisionally) the first Wednesday in July. No list required for this.

Museum Closures

The Museum is closed between 5th December 2005 and 7th January 2006. As mentioned at the AGM, we will open on Wednesdays and Sundays only from 8th January 2006 for a trial period, since Saturday attendances have been the lowest of the three days.

Pamphlet: Registers 5b

Work is nearing completion of the baptism register of Christ Church from 1912 to 1922 and I hope it will be ready in time for the January meeting. Most of the entries show the date of birth as well as of baptism. Next to be tackled will be the baptisms at All Saints 1902-1911.

Tithe map

Neil has now completed the Paddlesworth tithe maps with sections two and three (inserted with this Newsletter). Our warmest thanks to him for completing this project. He points out that Thomas Stephens, farmer at Paddlesworth, was also recorded as owning the fields around Dode church. We surmise that these were part of the original church land and from 1366 when the two churches were united, the parson (and after Henry VIII the Paddlesworth farmer as lay parson - Stephens is named as such in one of Phelps's notebooks) had ownership of them. We hope to display larger copies of these maps in the Museum in the New Year.

Postcards

We have been able to scan a good number of Snodland and Hambrook postcards in recent weeks and have also acquired the following originals, mostly from the 'Kent Series':

Hambrook postcard: Meopham Green (coloured)

Hambrook postcard: Seal Chart Church (coloured)

Hambrook postcard: Cooling Castle (coloured)

Hambrook postcard: Christ Church for Museum (sepia; like the 1911 card, but without the picture of Rev. A.P. Williams in the top right corner.)

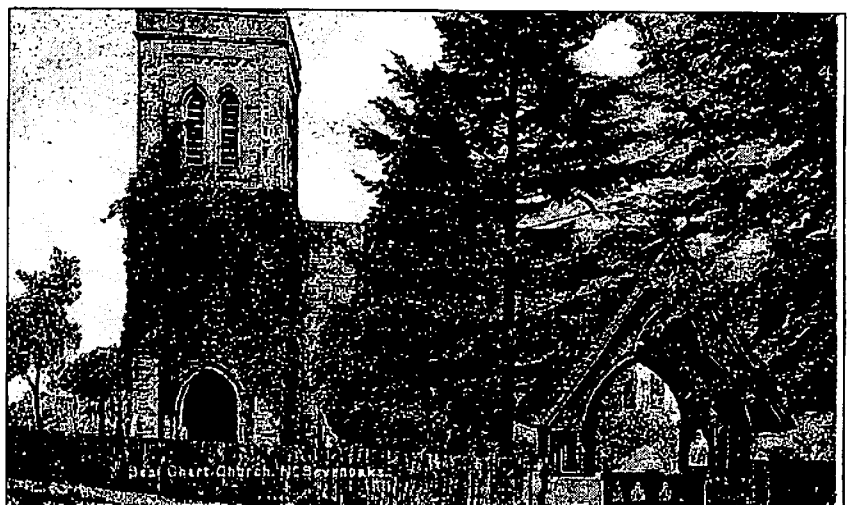
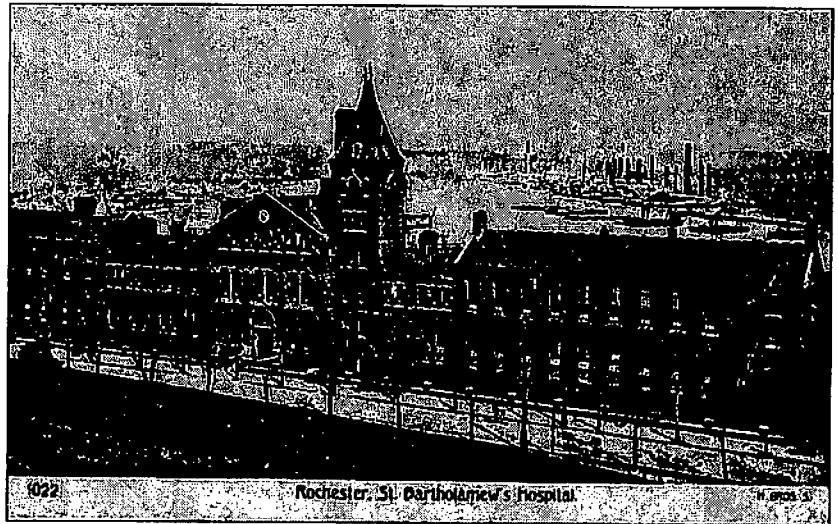
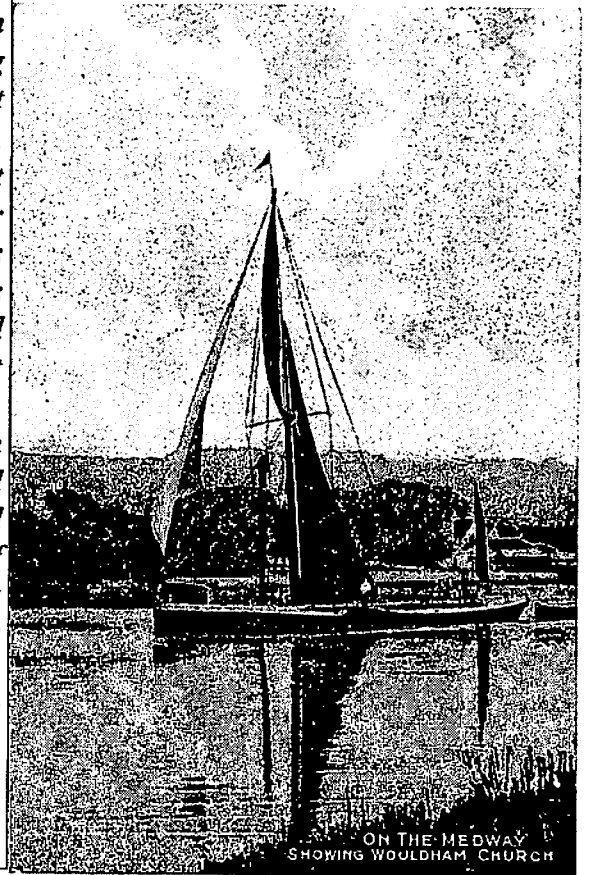
Hambrook postcard: Hop-picking: 'picking into bins' (coloured)

photograph of unknown group of hop-pickers, with stamp 'W. D. Clarke, Snodland' on reverse

Hambrook postcard: Parson's Corner (sepia; a new variant of the card first issued in colour in the Kent Series)

Hambrook postcard: Offham (showing the quintain); sepia, with wide margins like the '1908' issue.

Thanks to John Soane for allowing scans of the first two pictures here. Note the cement works on the river bank behind Bart's Hospital. This was the first Portland cement works at Frindsbury, opened in 1851. In 1900 it employed 800 men and had an output of c.4000 tons a week. This is a Hambrook Bros. photo, the others are from A. N. Hambrook's 'Kent Series'.





Snodland Historical Society

Volume 9, Issue 2

www.snodlandhistory.org.uk

April 2006

Correspondence

Correspondence and enquiries about the Society (including applications for membership) should be addressed to

Dr. Andrew Ashbee, 214, Malling Road, Snodland Kent ME6 5EQ (tel 01634-243001; e-mail: aa0060962@blueyonder.co.uk);

or to the Secretary: Mr. Neil Miners, 13 Gorham Close, Snodland, Kent ME6 5EZ; e-mail: neilminers@yahoo.co.uk

Treasurer

We are delighted that Mrs Pat Gest has volunteered to be the Society's Treasurer and we welcome her and her husband as new members. All is now in place after the usual struggle to change bank details. Many thanks too to Denis Anstey, who took over the job on a temporary basis in September, for keeping the society's finances in order for several months and to Brenda Ashbee for dealing with the subscriptions.

Meetings

Devonshire Rooms, Wednesdays, 8 p.m. Free to members. Visitors welcome at £1 per meeting.

(For the record): **5 April 2006.** Tony Farnham made a welcome return and spoke on 'Finding a Family. A Personal Journey': his successful efforts to trace his natural mother and father following his adoption as a baby.

3 May 2006. Mrs Pat Mortlock, a guide at Ightham Mote, will give an illustrated talk on 'Ightham Mote: History and Conservation'.

Other forthcoming events

7 June 2006. Andrew Ashbee will give a guided

tour of All Saints church. Meet at the church at 8 p.m.

5 July 2006. Visit to Cranbrook Museum. This is an old timber-framed building, parts of which date back to the 15th century. There are twelve rooms of exhibits relating to Cranbrook and rural Kent. We have arranged to meet there at 8 p.m. (a Wednesday) and are assuming that we will journey in cars. The list for intending visitors has been available at recent meetings, but anyone needing a lift or who has not signed as wishing to come should contact Andrew Ashbee. The entrance fee is £2.00.

8 July 2006 (Saturday). The town's annual Carnival. We will have a stall as usual.

15 July 2006 (Saturday). We are privileged to be able to host the third conference of the Place-Names Group of the Kent Archaeological Society. This will be at the United Church, High Street, Snodland, on the above date. Programmes are available at the Museum or from Andrew Ashbee. The two speakers, Dr David Parsons, Director of the Institute for Name-Studies, University of Nottingham, and Dr Paul Cullen, Advisor on Kent names there, are the national experts in the field and we expect a good turnout from around the county. The fee is £7. Drinks and biscuits will be provided, but not lunch. The programme is:

10.00 Reception and coffee

10.30 DP: Reintroduction to English Place-Names

11.30 PC: Current research in Kent

12-30 - 1.30; Break for lunch

- 1.30: DP: Place-names and the Church
- 2.00: PC: Local Place-Names
- 2.45: Discussion/Questions and Coffee
- 3.30: optional visit to Snodland Millennium Museum.

Tommy Pinkham Memorial Cross Found

Neil Miners



Squadron Leader Philip "Tommy" Pinkham was a Spitfire pilot who was shot down and killed on 5th September 1940, crashing into the North Downs above Birling. Pinkham had joined the RAF in 1935. He flew numerous aeroplanes

including Bulldogs, Harvards (a training aircraft) and Hurricanes, and in January 1938 he became an Instructor at the air fighting school Sutton Bridge. On 3 June 1940 Pinkham was given command of 19 Squadron at Duxford and was awarded the AFC on 11 July. Within days the Battle of Britain had commenced. Men like Pinkham were to face the Luftwaffe's Dorniers, Messerschmitts (Me 109s) and Junkers in a Battle crucial to the outcome of the War.

On 5th September, eleven Spitfires led by Pinkham took off at 09:47 hours to patrol Hornchurch at 15,000ft. An enemy formation of 40 Dorniers 215's and 40 Me 109s was sighted over the Chatham/ Ashford/ Medway/ Maidstone quadrilateral and 19 Squadron engaged. Pinkham was shot down by the Me 109 fighters and crashed at the foot of 16 Acres.

A memorial Plaque was erected to mark the crash site some time after the war. At present it is unknown when or who erected this plaque. It fell into disrepair in the early 1990s and was replaced by a cross. This cross may have been erected on the initiative of a Snodland resident, Diane Atkinson, then living in Mill Lane, who discovered the dilapidated plaque and wrote to the Kent Messenger (in August 1993) asking for information on Tommy Pinkham. Unfortunately it has not been possible to contact Diane Atkinson. Just before Christmas last year, several searches of the area by Neil Miners, secretary of the Historical Society, failed to locate the cross. It was feared to have been removed, or to have fallen down and lost in the undergrowth, as the last time Neil had seen the cross was six years earlier, in May 1999.

Searching on the Internet was more successful. By typing "Tommy Pinkham" into Google.co.uk gave a link to Key Publishing Aviation Ltd's website forum) In the Historic Aviation section Jon Pinkham, Tommy Pinkham's nephew had left a post asking for any information as to the location of the crash site

<http://forum.keypublishing.co.uk/showthread.php?t=1734>.

Neil contacted by email Jon Pinkham through

Alan Tissington, a collector and researcher of WWI & WWII militaria, who had contributed several posts on the forum page. Both Jon and Alan are from St Albans and it was arranged to visit the crash site as Jon did not know its location. Once the site was reached at the foot of 16 Acres another search for the cross began, and after about ten minutes Jon found his uncle's memorial cross. After taking photos Jon visited the Snodland Museum to show his uncle's RAF



Jon Pinkham at the memorial cross

Log Book and Air Force Cross medal to Dr Andrew Ashbee, chairman of the Historical Society. We have decided to establish a permanent display there to Squadron Leader Tommy Pinkham.

Tommy Pinkham was 25 when he was killed and he is buried at St Andrews Churchyard, Kingsbury, Middlesex. Jon has decided to loan his uncle's RAF logbook to the Duxford Imperial War Museum, where it will be shown in the new exhibition hall when completed this year.

Alan posted on the website forum the news that we had located the memorial with a photo of Jon at the cross and a photo of his uncle in RAF uniform. Another contributor to the forum, Archie from the RAF, who had helped fill in details about Tommy Pinkham's Air Force career has replied: "well done to all concerned for ensuring that another of the many will be remembered."

'England's Past for Everyone'

This project is now well under way and volunteers will soon begin surveying and photographing the area and what remains of its industrial heritage. Snodland has been chosen as having prime examples of housing built for workers in the paper and cement industries. Andrew Hann writes to me: 'Perhaps members of the Snodland Historical Society would be interested in getting involved. The survey would involve recording architectural details of all pre-1900 buildings in the town using English Heritage forms and then taking photographs of selected buildings to be mounted later on the web-site. I hope to be able to appoint an architectural consultant to assist with the survey, but we will need plenty of bodies on the ground to collect the data.' Let me know if you would like to be involved with this.

New Approaches to Community History: Anglo-French Experiences

A symposium with the above title is to be held at the University of Greenwich Kings Hill campus on Friday 5 May. 'The aim is to foster a productive dialogue between academics, archivists and local historians in the production of history in all its forms on both sides of the Channel.' Andrew Ashbee is representing local historical societies and will speak on 'The local historical society in the community'. Apart from French contributions, other speakers include Professor Sarah Palmer (University of Greenwich), Stuart Bligh (Centre for Kentish Studies) and Aretha George (Victoria County History). Admission is free but places need to be booked with Emma Mahoney at E.L.Mahoney@greenwich.ac.uk before 21 May.

Friends of Medway Archives and Local Study Centre

The inaugural meeting of the Friends was held at the Civic Centre, Strood, on April 6th, when the constitution was agreed and a committee elected. The aim is to support the work of the Medway archives by fund-raising and other activities, including help with cataloguing and

conservation. Members will also have the opportunity to visit local places of interest and to hear talks. Annual individual membership is £10 and there are other rates for families, societies and corporate membership. The Friends' Newsletter can be seen at <http://ajthomas.com/theclocktower>.

The Museum

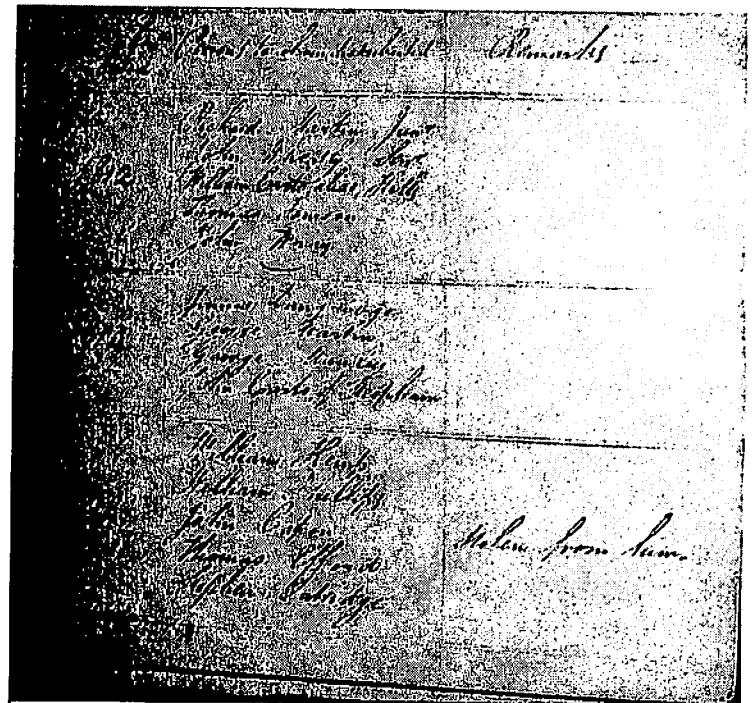
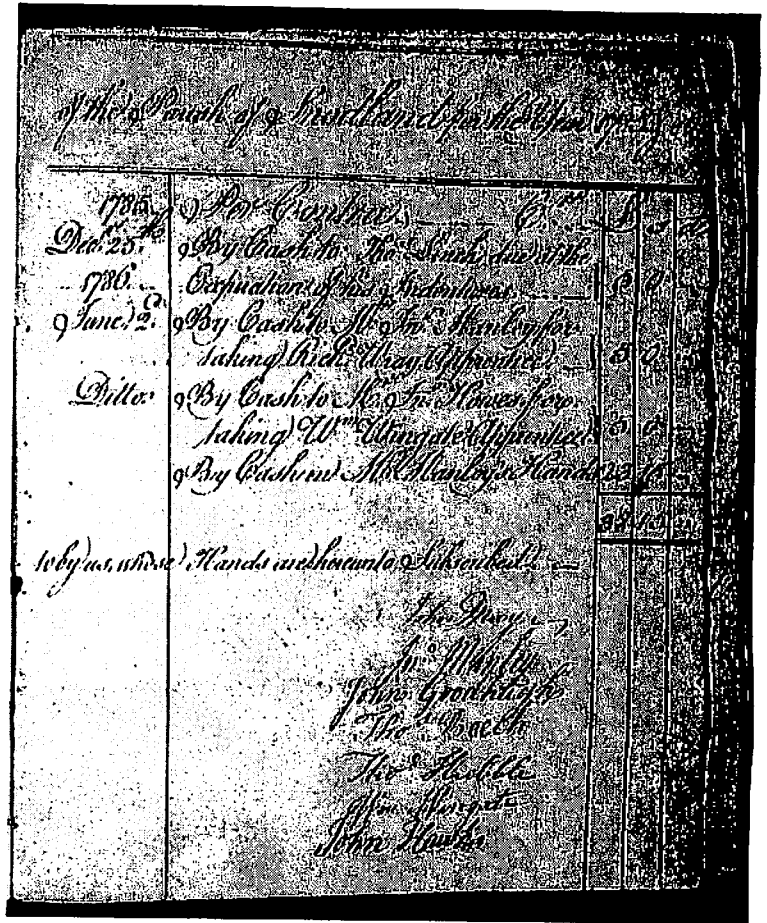
Some interesting items have come to the Museum in recent weeks. Ted Gowers has kindly given us some late nineteenth-century items, mostly concerning the cement industry. Of particular interest is a series of plans of bottle kilns from Formby's works and there are also some deeds relating to wharves on the Medway. The Town Council has placed on loan a file of miscellaneous items from their archive including some early catalogues of the Lead-Wool Company. There is also a 1944 map of the works with every building labelled and a fascinating series of photographs taken when they were involved in the re-building and heightening of the old Aswan Dam in 1929-33.

Our collection of Hambrook photographs continues to grow. This year we have purchased postcards of Goodnestone and Adisham Churches, Prior's Gate, Rochester, The Common, Tunbridge Wells, Ightham Mote, Plaxtol Village, Platt and St Mary's Platt Churches.

Preparations are in hand to mount an exhibition to commemorate the 100th anniversary of the great paper mill fire of 12 August 1906. It is planned to show this between June and December.

Charities

Arising from the 'England's Past for Everyone' project, I contacted the Godden Trustees since local apprenticeships is one of the areas being investigated. I was delighted to find that the earliest book they have dates from 1784 and shows the Godden apprenticeships until 1869. At the other end of the book are lists of those receiving great-coats from the John May charity between 1812 and 1924, in all a remarkable collection. The volume has been digitally photographed and put on a CD-ROM.



The 1785 Godden Charity expenditure on apprenticeships. Signatures of the trustees include John May and John Goodhugh (Waghorn's grandfather). The first entries for the great-coat charity below, show John Capon's coat 'stolen from him' in 1814, but he received a replacement the following year.



Snodland Historical Society

Volume 9, Issue 3

www.snodlandhistory.org.uk

September 2006

Correspondence

Correspondence and enquiries about the Society (including applications for membership) should be addressed to

Dr. Andrew Ashbee, 214, Malling Road, Snodland Kent ME6 5EQ (tel 01634-243001; e-mail: aa0060962@blueyonder.co.uk); or to the Secretary: Mr. Neil Miners, 13 Gorham Close, Snodland, Kent ME6 5EZ; e-mail: neilminers@yahoo.co.uk

Subscriptions

Members are invited to renew their subscriptions for the new season 2006-7. Rates are unchanged. These can be paid at meetings or sent to the Treasurer, Mrs. Patricia Gest, 1, Vauxhall Crescent, Ham Hill, Snodland, Kent, ME6 5JT. Membership will cease if a subscription is unpaid by February 2007.

Meetings

4 October 2006. Annual General Meeting. Followed by short presentations on local historical topics.

1 November 2006. Monty Parkin makes a welcome return and this time will give a humorous talk entitled 'Yesterday's News': items which have caught his attention when researching in old newspapers.

6 December 2006. The usual evening of slides of old Snodland and of Hambrook's Kent pictures. Mince pies and wine will be served.

31 January 2007. We are delighted that Sarah Palmer, Professor of Maritime History at the University of Greenwich and Director of the

Greenwich Maritime Institute will give an illustrated talk: 'The Old Life and New Life of the River Thames.'

7 March 2007. To be arranged.

4 April 2007. Geoff. Harvey: 'Defending the Medway and Chatham Dockyard'. A fascinating talk on the fortifications (most still to be seen), illustrated from the air as well as from the ground.

2 May 2007. To be arranged.

Other events

The two additional meetings held this summer were both very successful. We had a warm welcome at the Cranbrook Museum and were very impressed by the excellent displays in a lovely building. Hopefully we will be able to organize further visits of this kind.

Next summer there will be a 'Snodland Festival' between 7th and 22nd July. Two 'Historical Walks' round Snodland are planned.

Another Local and Family History Open Day for Medway will be held at the Civic Suite, Civic Centre, Strood, on Saturday and Sunday, 15 and 16 September 2007. We have been invited to participate and have accepted.

Publications

Work for the 'England's Past for Everyone' project has prevented progress on creating any new publications, so there is nothing much to report at present. Andrew Ashbee's 'A Little History of Snodland', published in 1994, went out-of-print in about four years, but it would have been risky to order another print run. Now,

however, we have the facility to make our own copies on demand, so it is available again, very slightly revised, in A4 size, still at the old price of £7.50. The summary of the 1891 census printed at the back of the volume has been omitted and the complete 1901 Snodland census (with the addition of Ham Hill) has been printed separately (£5). It is intended that the newspaper cuttings 1865-1881 shared between two old publications: 'Notes from Snodland Rectory' and 'A Selection of Newspaper Cuttings' will be brought into a single volume. (Copies of the 'Selection' have run out). Unfortunately the photocopied images from the original papers do not scan well, so much typing is required!

Friends of Medway Archives

Earlier this year the Friends of Medway Archives and Local Study Centre was formed. Its primary aim is to raise funds to help with repair and purchase of documents. (The earliest All Saints register, which has been unavailable for consultation for some years, is one of the first books to benefit from this programme and can now be seen via the MALSC's cityark web-site.) We have joined as a Society (the first one to do so). Although it may seem that benefits to us are few, we would like to support the work of the Centre, where all our parish documents are held. The Friends will advertise our exhibitions at the Museum and our list of lectures on their web-site. The Friends also arranges a series of lectures, visits and exhibitions. Details will be found on their new web-site: www.foma.btik.com and there is also a newsletter, currently at <http://ajthomas.com/theclocktower>. In future this may move to the new site. For the benefit of those without internet access these are the next planned events (at the Archives, Civic Centre, Strood):

(a) talks at 7 p.m.: 10 October. What's in the map cabinet?; 21 November: Tony Farnham: Sailing barges in their heyday.

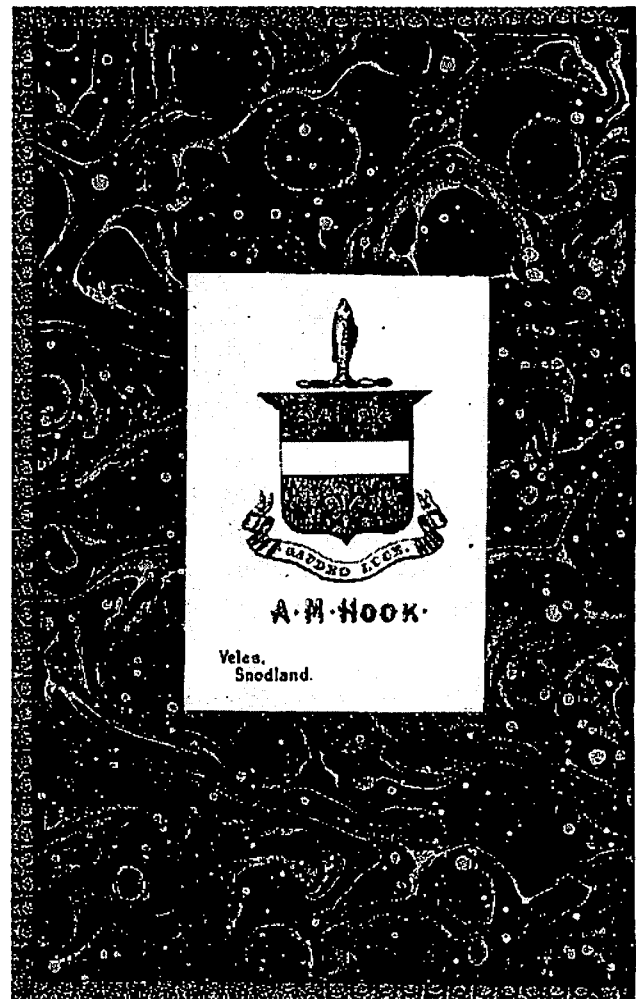
(b) exhibition: 7 September to 3 November: Jewish presence in Medway.

It is essential to book for those wishing to attend

the talks: 01634 332714: £3 per talk.

Swedenborg books

In May a periodic check on second-hand Snodland books available via the internet revealed one of writings by Emanuel Swedenborg with a book-plate showing it belonged to 'A. M. Hook'. Anna Maria (1803-1881) was the mother of Charles Townsend Hook and the one who first involved the family with the Swedenborgians (in Norwich). Although it cost £190 it seemed worth retrieving this important piece of Snodland's past, so it was ordered. The next day I received a phone call from the bookseller (in Worcester), telling me that he actually had another 21 volumes! All but one were beautifully bound in leather and contained rare mid-nineteenth century prints of Swedenborg's works. Most incorporated Anna Maria's bookplate. The total cost was £1315, but we agreed a price of £1090 (post free) in view of their historical interest to Snodland and the fact that the collection would remain



together. Clearly our Society did not have immediate funds for such a purchase, so an application was made to the Partnership. It is gratifying to report that the Town Council has bought (and now owns) the volumes and we thank them very much for their interest and help. The collection is kept in the bookcase in the Museum and can be seen on request:

Arcana Coelestia 12 volumes and 2 index volumes; *Apocalypse Explained* 6 volumes; two volumes of shorter works bound together, all published between 1840 and 1856..

In one of the books the bookseller found a card from 'Boz' [Charles Dickens] addressed to 'Mrs Hook' 'with kind love'. I was curious to discover how they arrived at Worcester. The bookseller bought them at auction in Exeter. At his suggestion I sent a letter via the auctioneers asking them to pass it to the vendor, which they did. She kindly made enquiries within her family for me, but without much success. We do know, however, that the books belonged to her grandfather George Dicks, 'whose family had belonged to the New Church since Swedenborg's time' - an affiliation still continuing with his descendants. George Dicks died many years ago and there are now no relations able to help. It seems possible, then, that the books may have passed directly from Hook to Dicks.

Museum

From July to December there is an exhibition commemorating the hundredth anniversary of the great mill fire of 12 August 1906, together with a small group of pictures for the 150th anniversary of the opening of the Strood to Paddock Wood railway. We are very grateful to Smurfit Kappa Townsend Hook for the temporary loan of items from their archive, some of which have now been copied. Of particular interest is the 'Private Journal' of Charles Townsend Hook - an account book, linking with the one we already hold on permanent loan, and the insurer's report concerning the fire. This disputes the cause of the fire and shows that eventually they paid considerably less than the firm was hoping for.

Through the good offices of our Treasurer, we

have been given a fine large map cabinet. This enables us to keep the maps and other over-size papers flat rather than in tubes (and also makes the place look a lot tidier!). As our collection grows more storage space is constantly required and I am very grateful to Bob Coomber for making shelves and supplying other storage facilities.

We have also been given an original 1867 OS map which the County Archives no longer needed. We already had a copy of part of this - the village itself - but the map extends northwards through Holborough to Halling and shows some of the industrial workings in Burham and Wouldham.

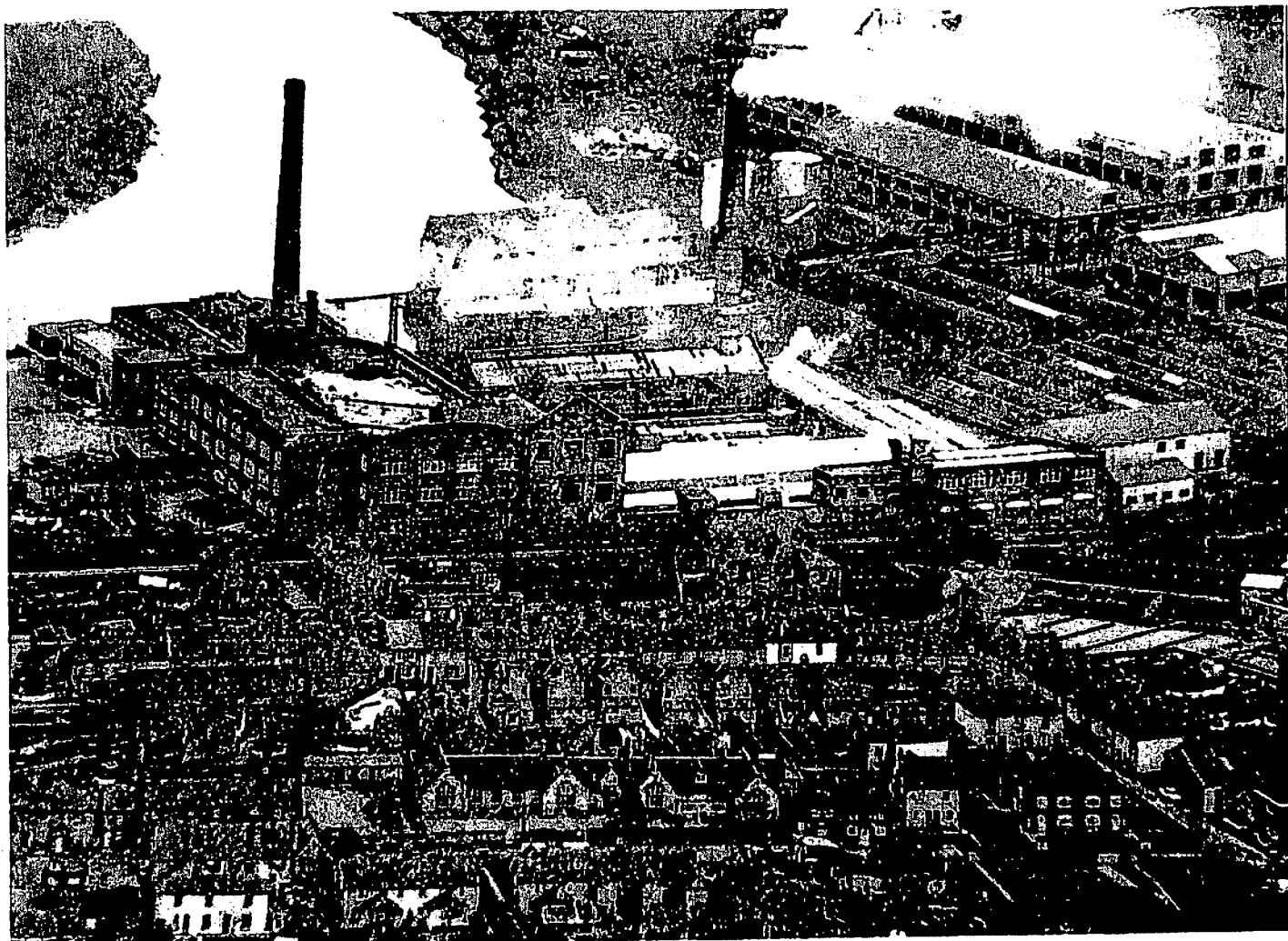
The latest Hambrook postcards (in colour) we have purchased are of Barfreton Church; Minster Church, Thanet; Coldred Church; Birling Church and School; and Halling Church. Also: Leybourne church from the Park (Stedman/Hambrook) and two early cards of the Waghorn statue at Chatham.

We have purchased two second-hand books: (a) the *Journal of the Royal Asiatic Society* (July 1997) which contains a fine article by Sarah Searight: 'A Waghorn Letter Book for 1840' (the hitherto unknown book of letters is owned by a philatelic firm). Intriguingly Waghorn himself was an early member of this Society. (b) H. D. Edwards, *The Mid Kent Water Company. The First Fifty Years 1898-1948* (Maidstone, 1954).

'England's Past for Everyone'

(a) Snodland Survey

As part of the Kent *England's Past for Everyone* project, on Saturday 23rd September a team of volunteers under the direction of John Vigar will be photographing and surveying the pre-1914 buildings in Snodland. This will be a rapid external survey (from the road), entering details on a printed form. It is hoped to make a photograph of each property (even though many have had major face-lifts). Originally the Director of EPE had made the cut-off date 1900, but now believes 1914 to be more sensible. However, this substantially increases the number of houses to be surveyed to about 600. Two other similar surveys have already taken place at Eccles and at Aylesford, but Snodland is much the largest. It is acknowledged nationally that insufficient research has been done into the houses



A good illustration of the need for the housing survey. A couple of buildings in what was Brook Street and about half of the houses in May Street are virtually all that remain from this mid-20th century photograph.

of ordinary workers, so these surveys will be most useful. We shall also try to include buildings which have been demolished (using photographs and other material held at the Museum), but this aspect will take longer to complete. I would hope that our Society would be able to supply a good number of volunteers (I already know of one or two) since it has proved easiest to work in groups of two. **If you are able to help at any time from 10 a.m. on the 23rd, please let me know.** Bring a packed lunch and a clipboard or similar hard surface. We will meet at the railway station forecourt, where John will explain how to complete the forms before work starts. A minimum of a dozen people will be needed; more will make the work easier.

(b) General progress

Since the beginning of the year a team of

volunteers has been collecting data of many kinds. Regular meetings have kept all informed of progress and there has been a good deal of exchange of information between the various groups. Census transcriptions have revealed that the photographer A. N. Hambrook was living at Manor House (opposite the church) in Halling at the time of the 1901 census; his father was foreman at one of the cement works. He was aged 26 and already occupied as 'printer and stationer'. By 1903 he was in Snodland. The celebrated one-armed postman William Collins, who travelled between Snodland and Rochester, was living in Station Road, Strood. His son William is listed as 'comedian' - perhaps he was a regular part of the entertainments in the theatres in the Medway Towns. A wealth of other material is coming to light which contributes to Snodland's history and that of the local industries.